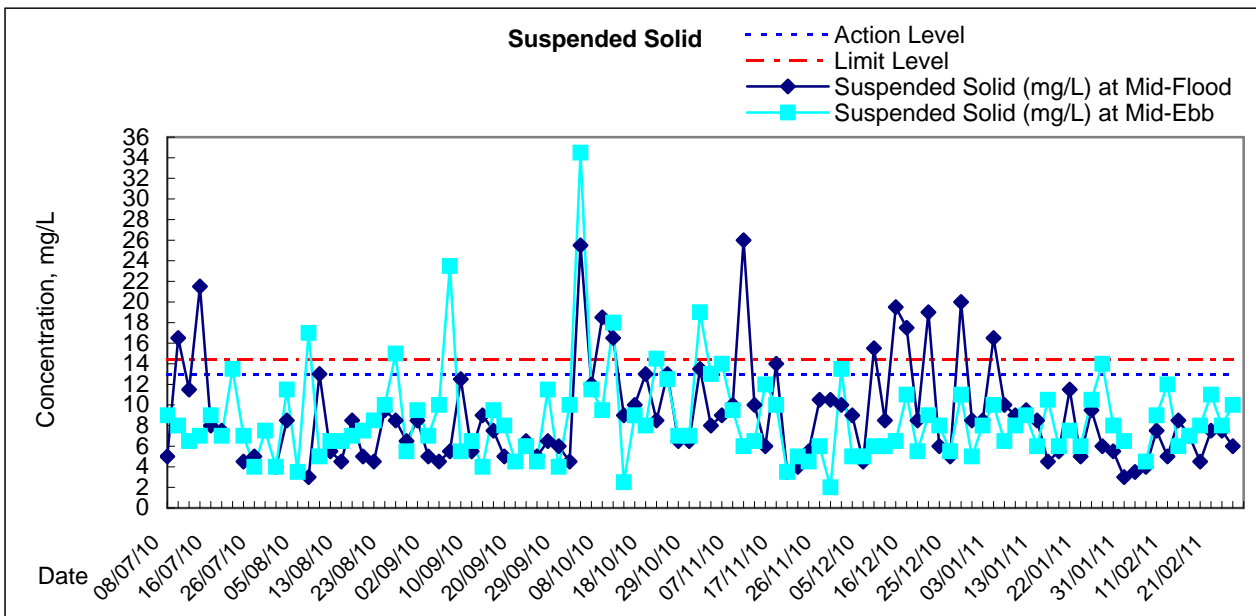
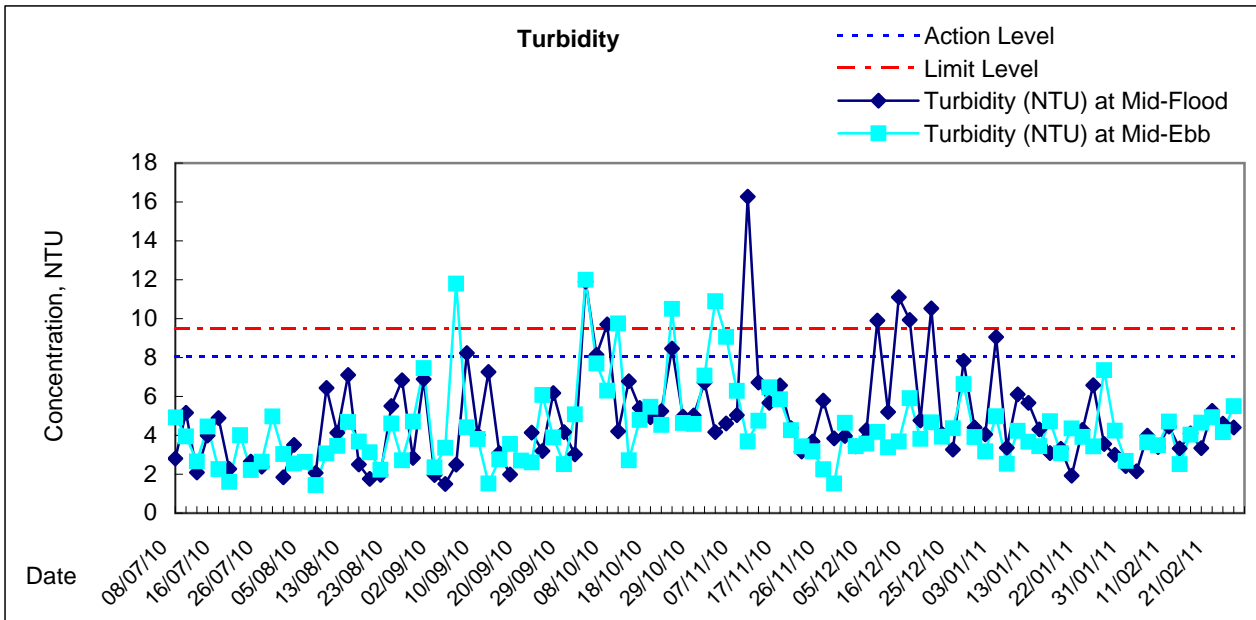
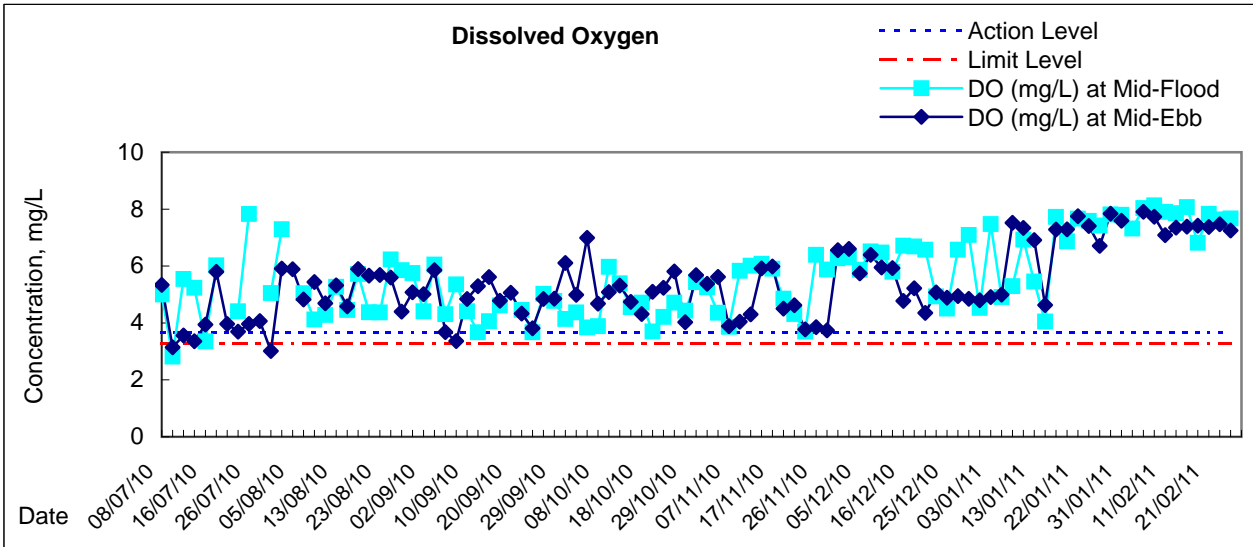
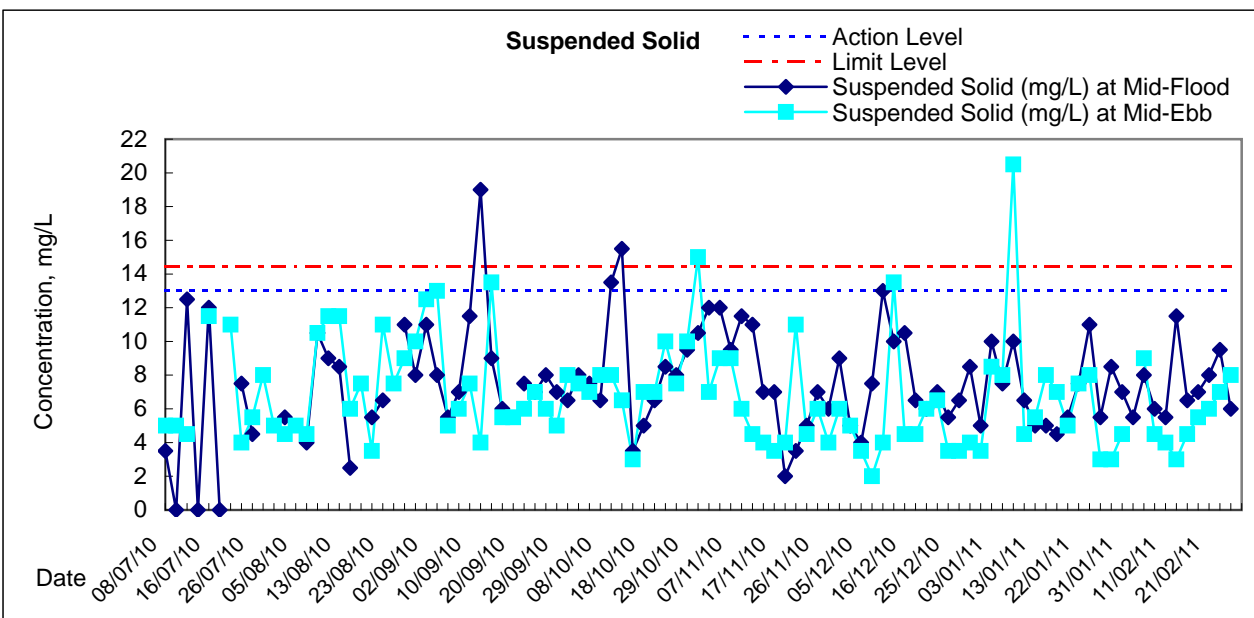
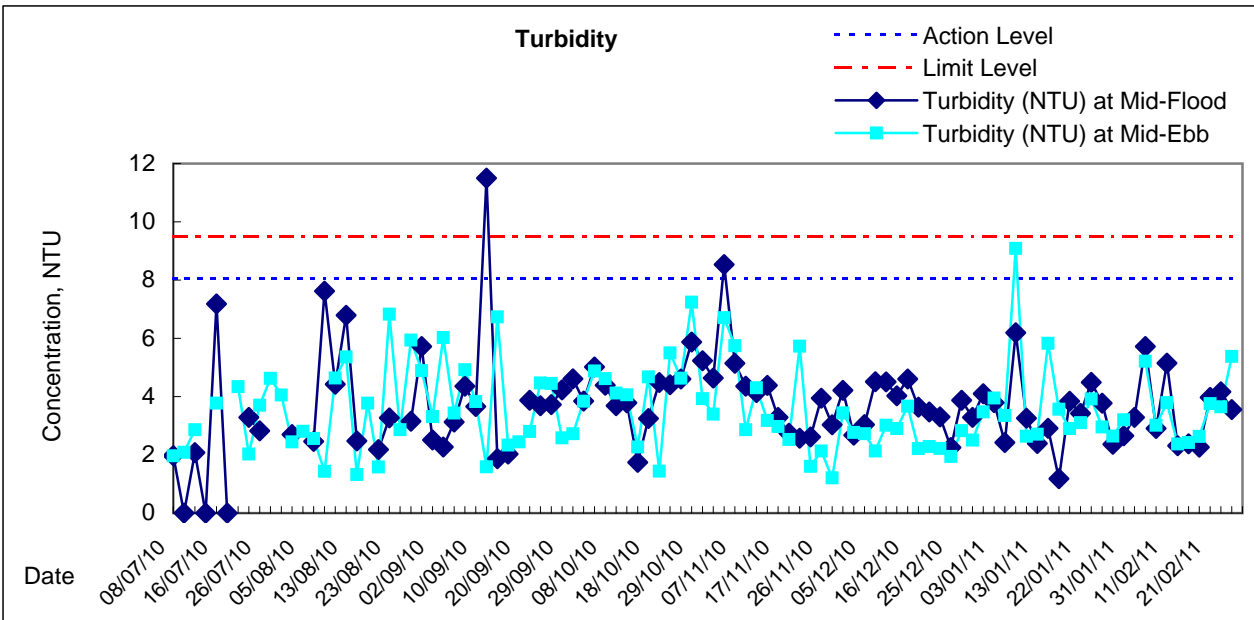
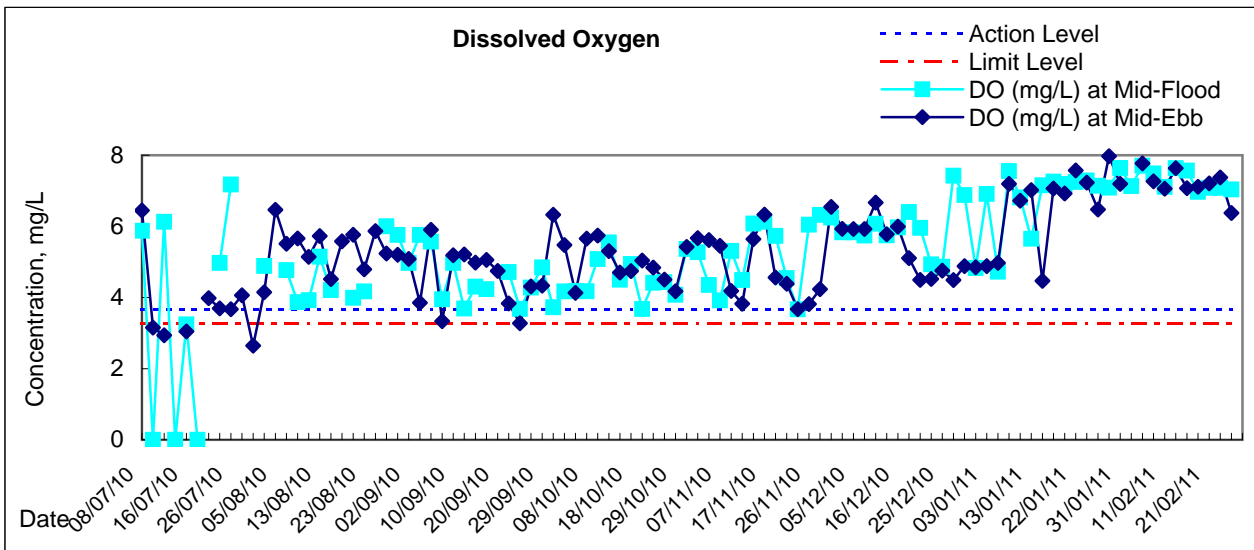


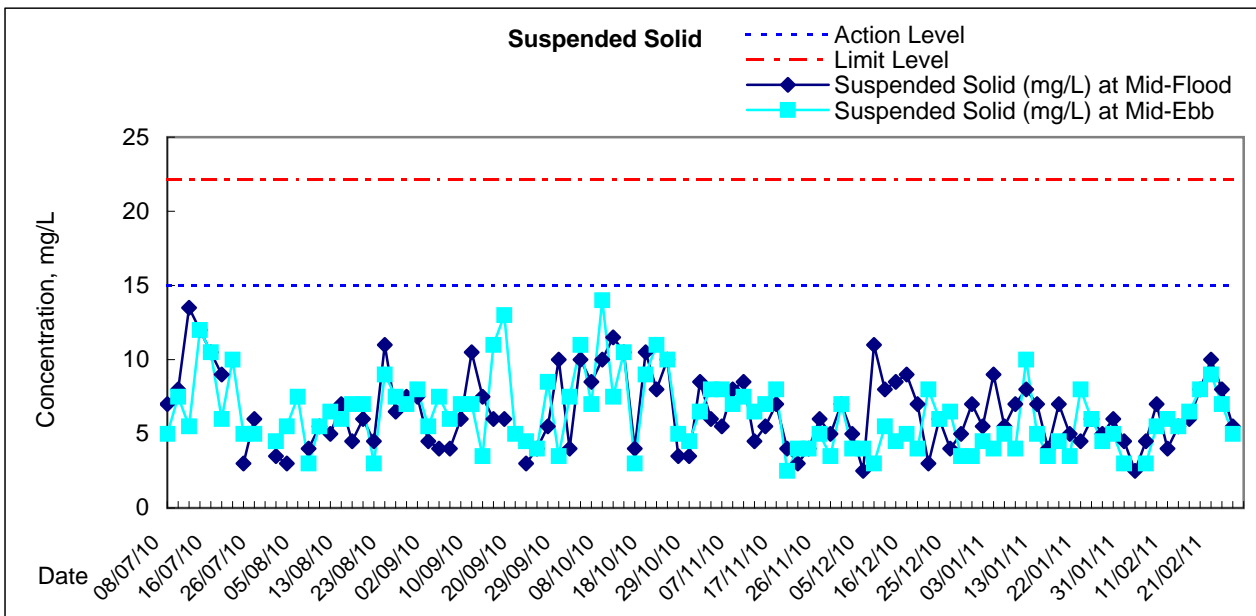
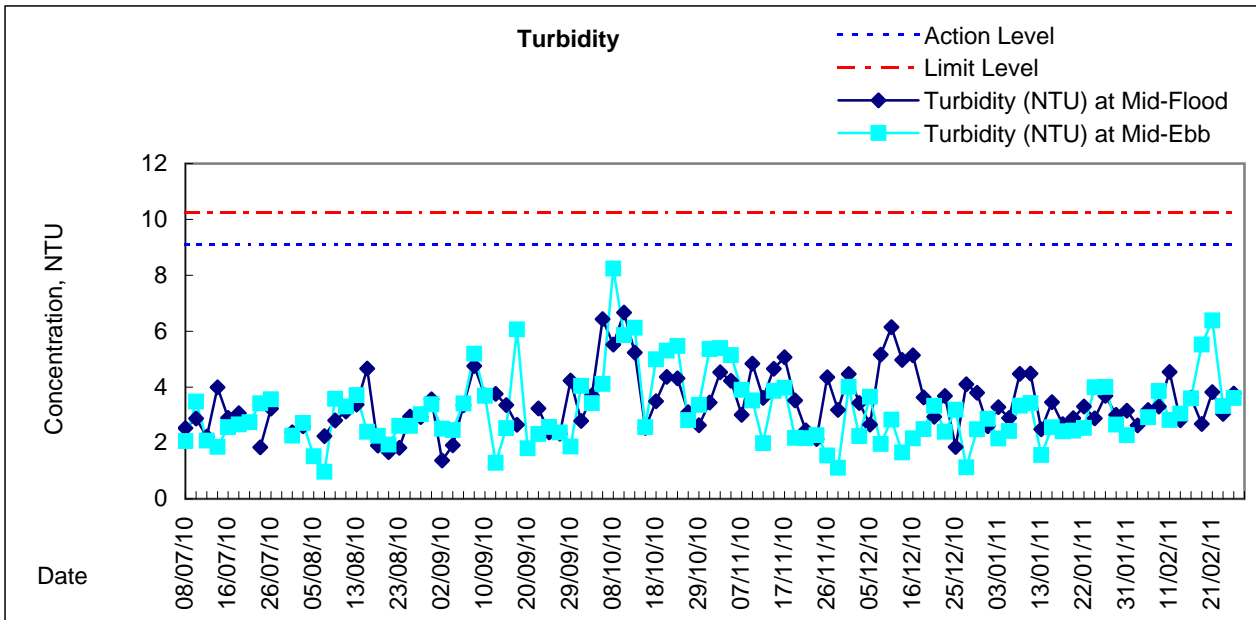
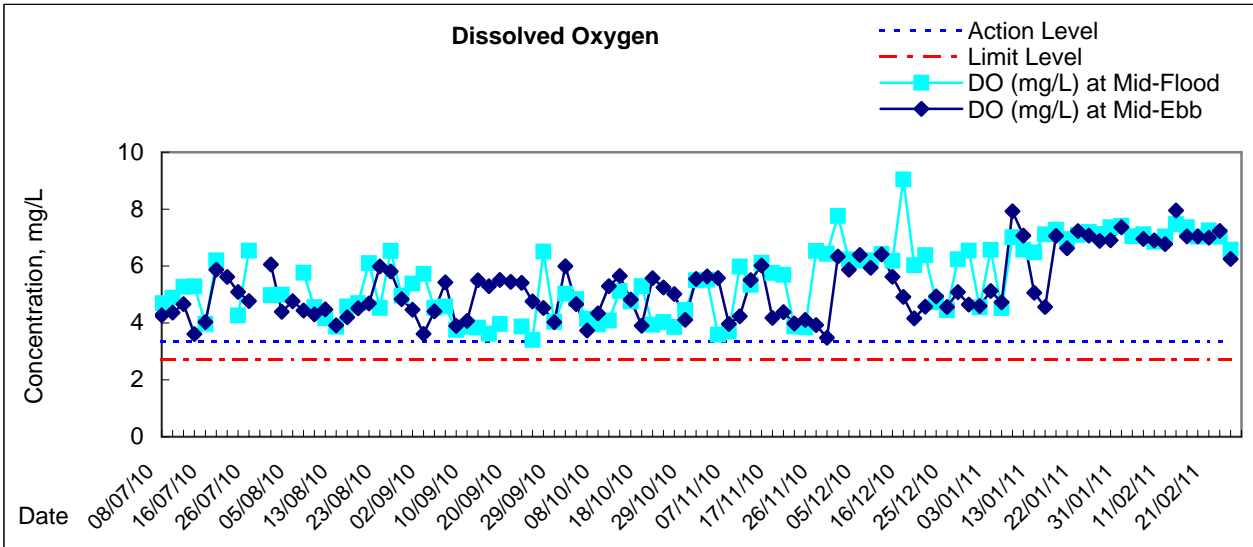


# Graphic Presentation of Water Quality Result of WSD20 - Kennedy Town



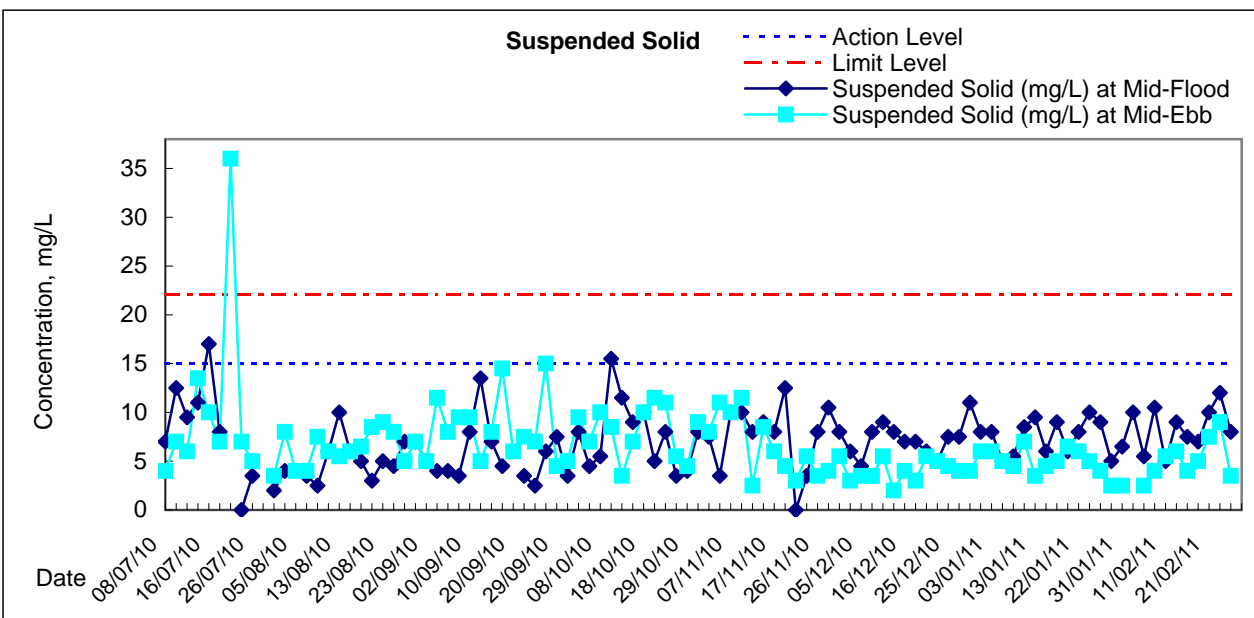
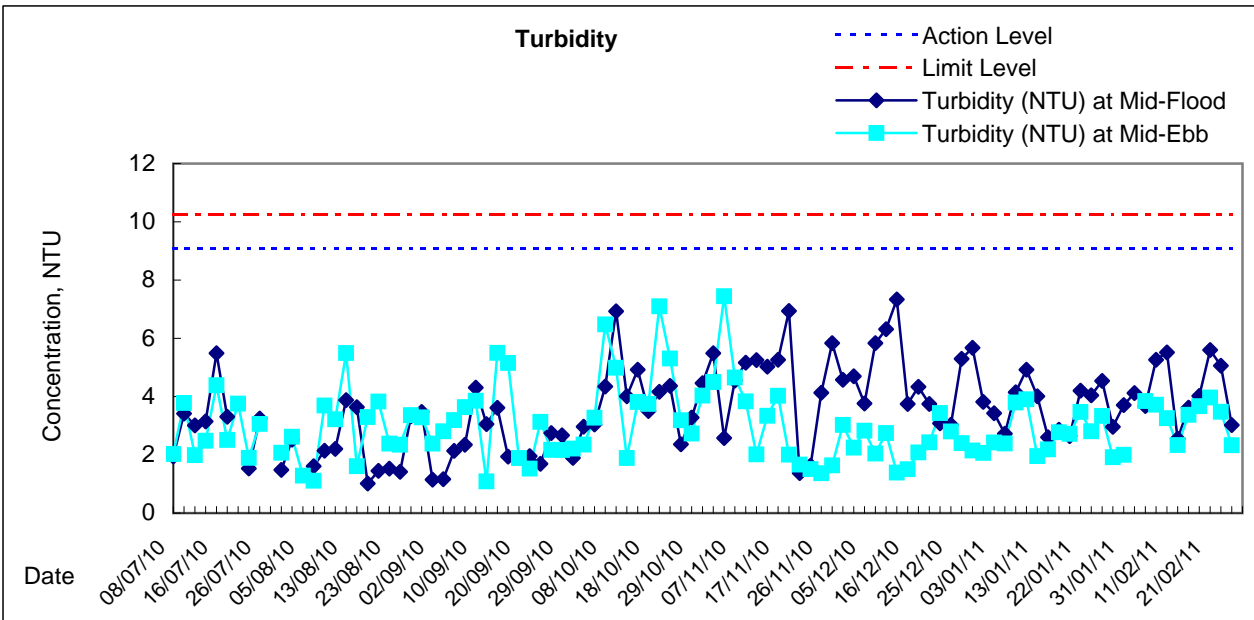
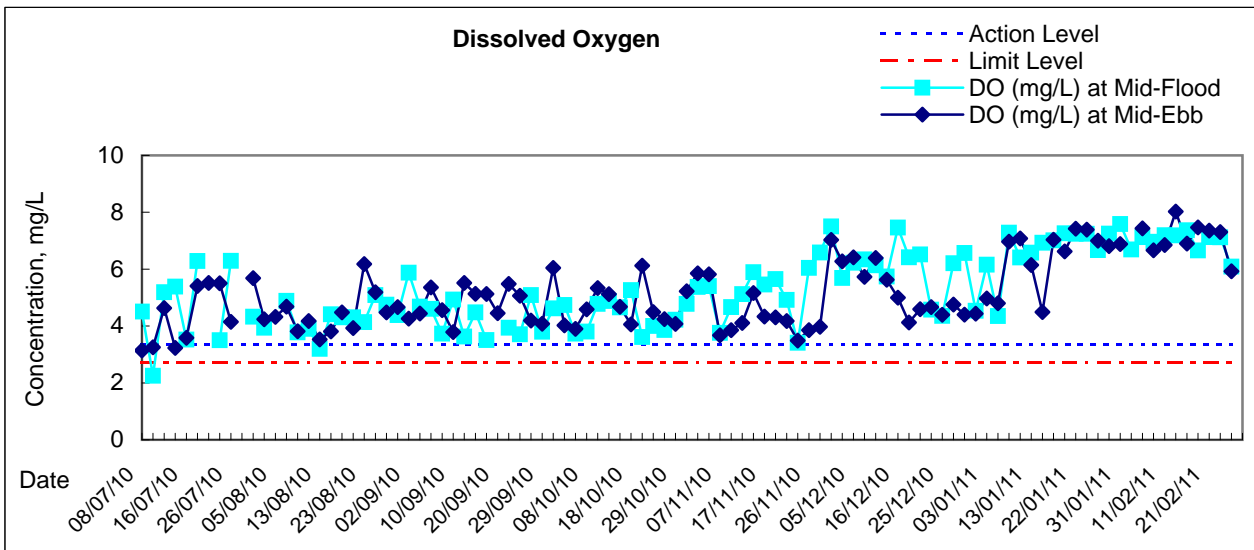






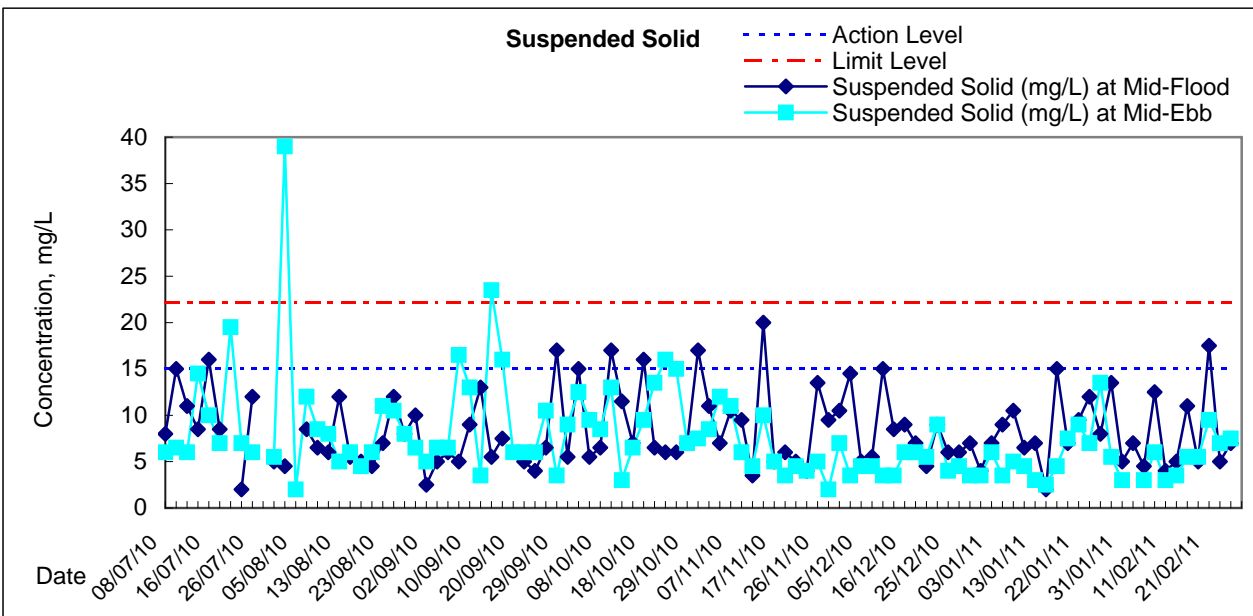
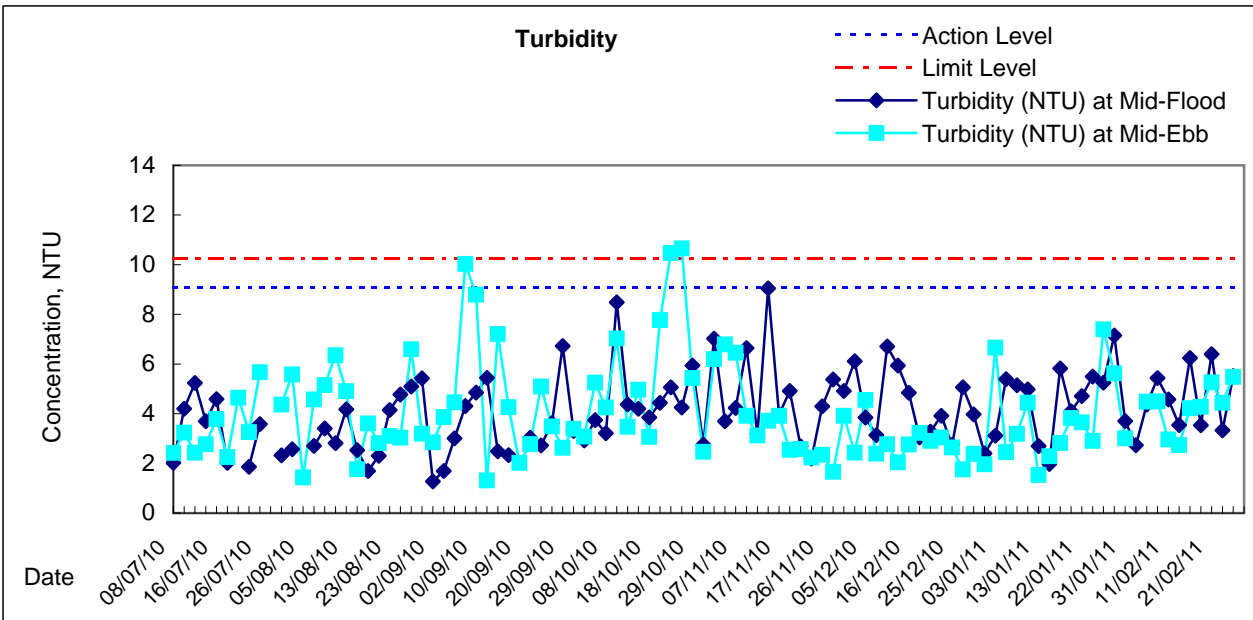
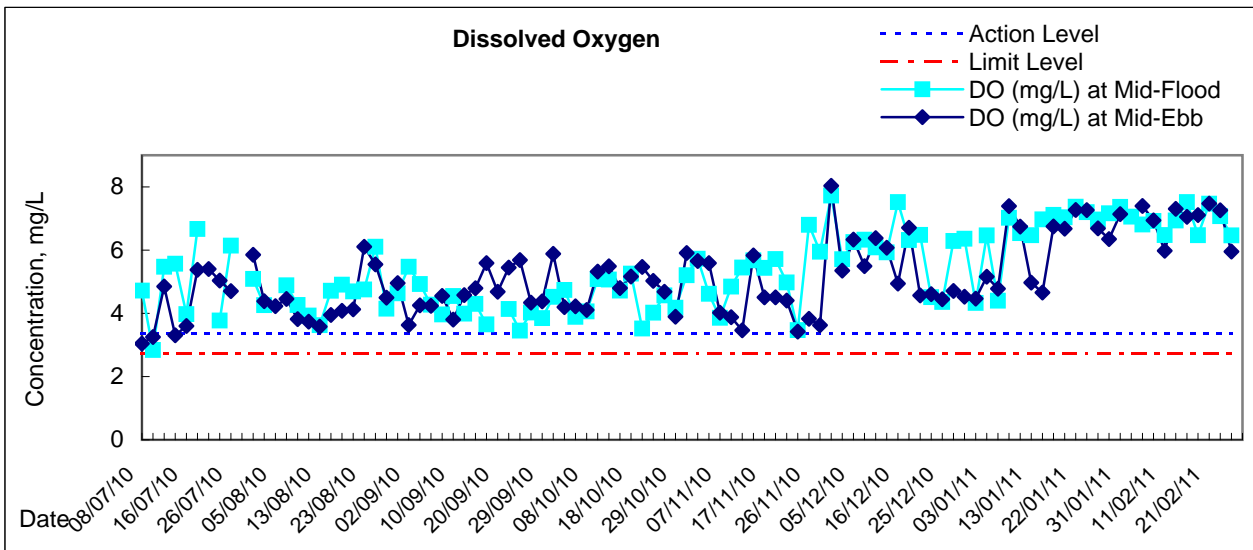


# Graphic Presentation of Water Quality Result of C2 - TH / APA / SOC



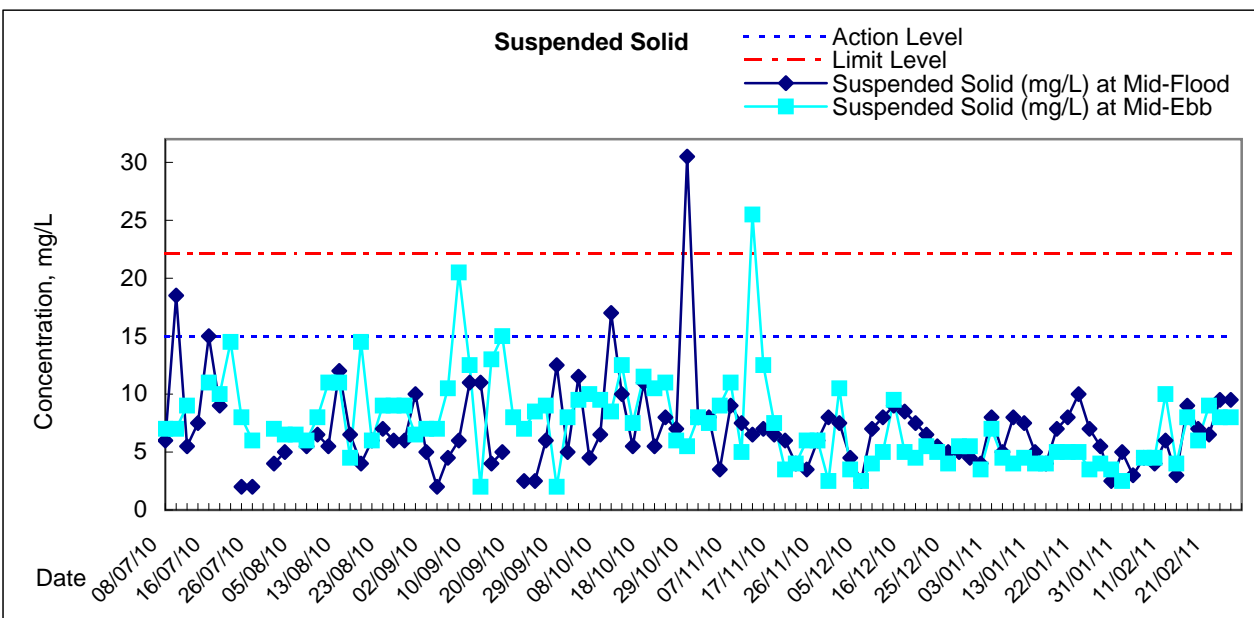
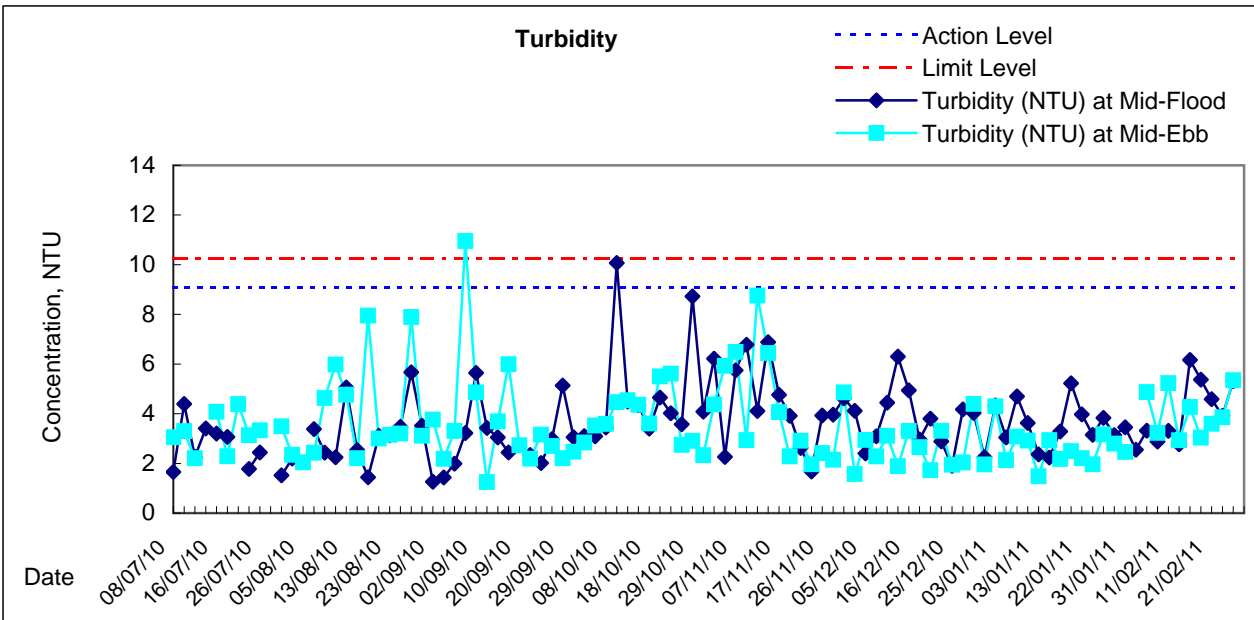
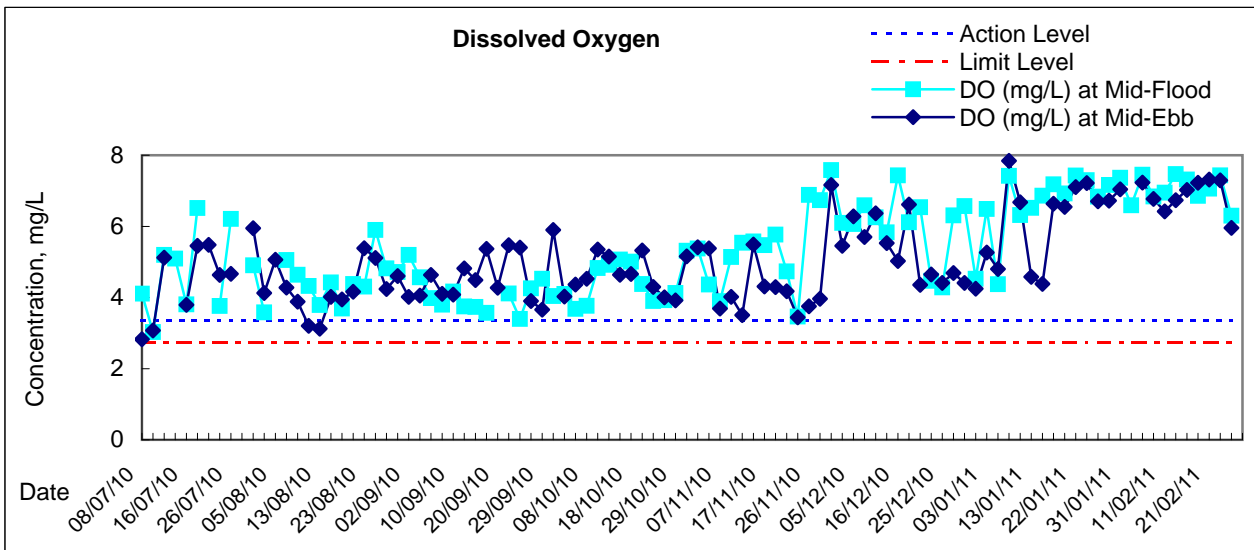


## Graphic Presentation of Water Quality Result of C3 - WCT and GEC



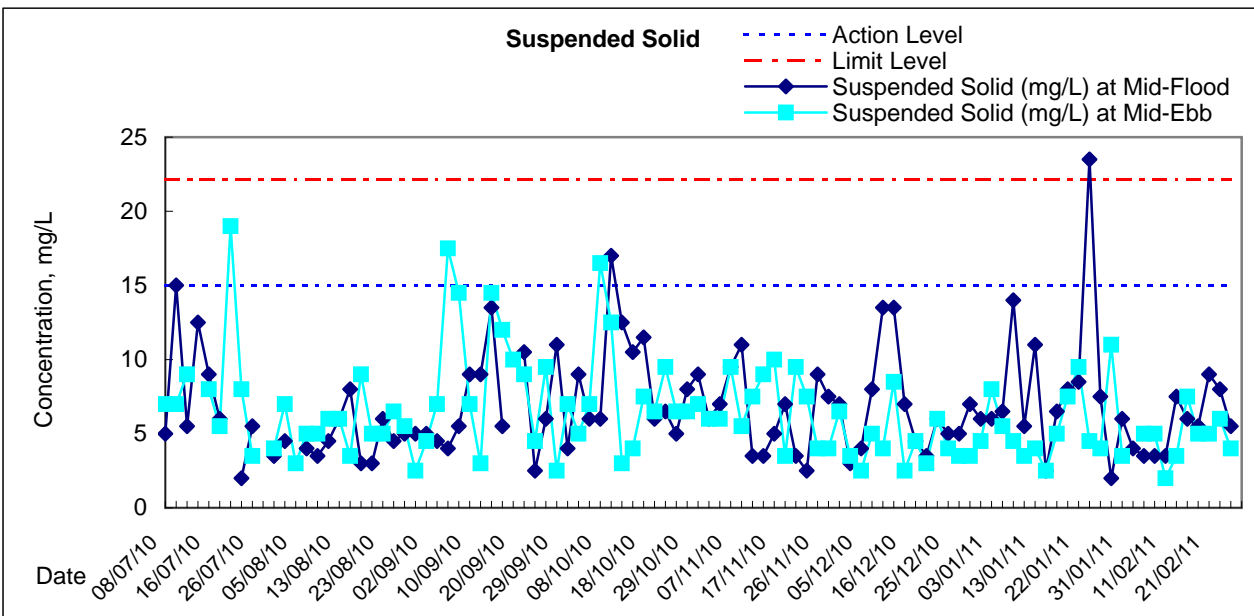
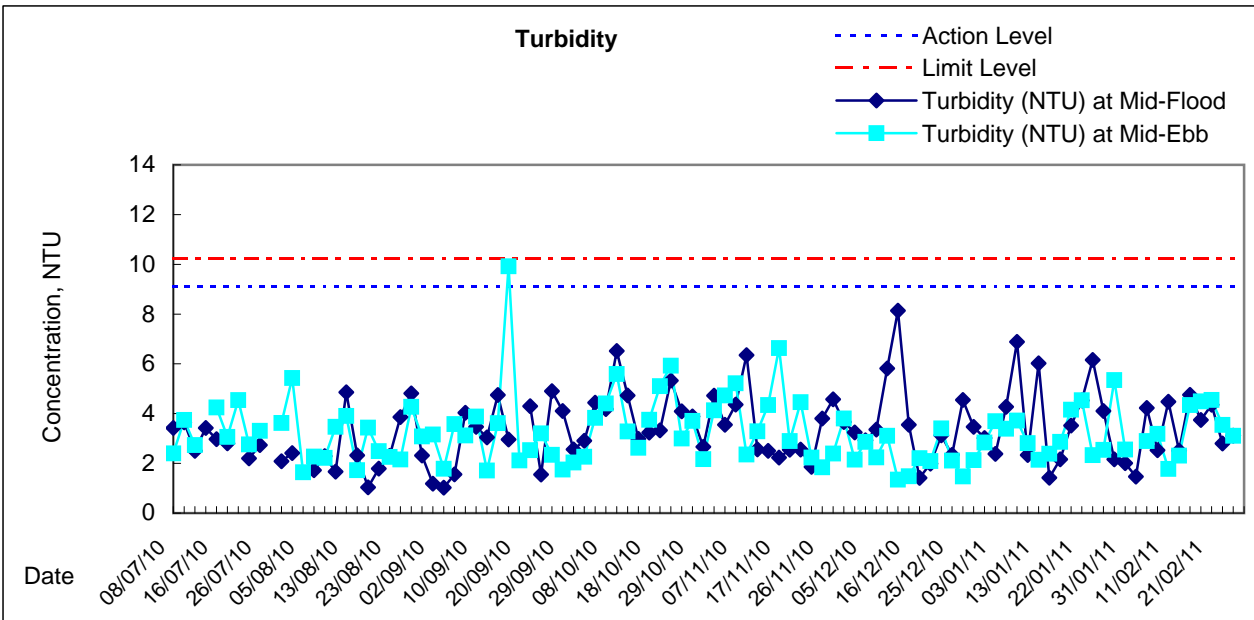
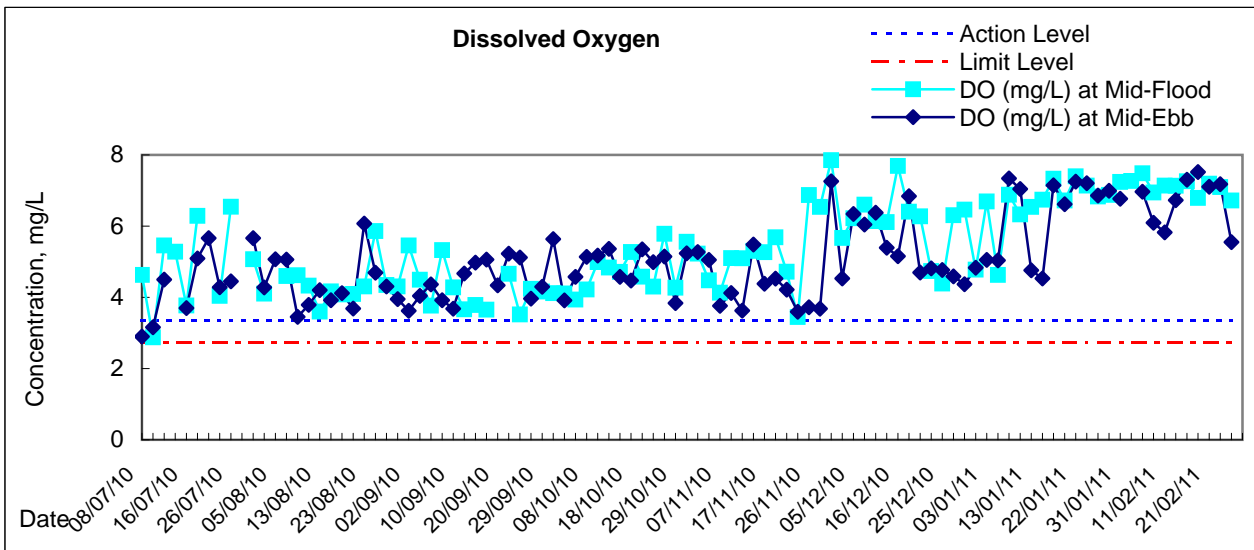


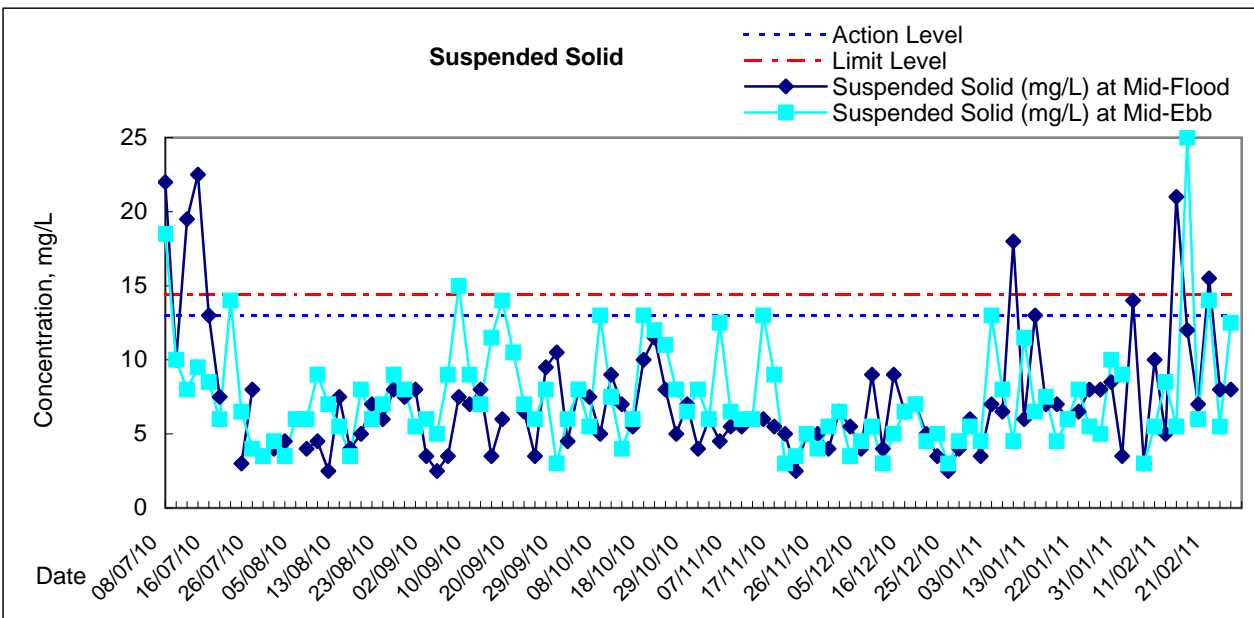
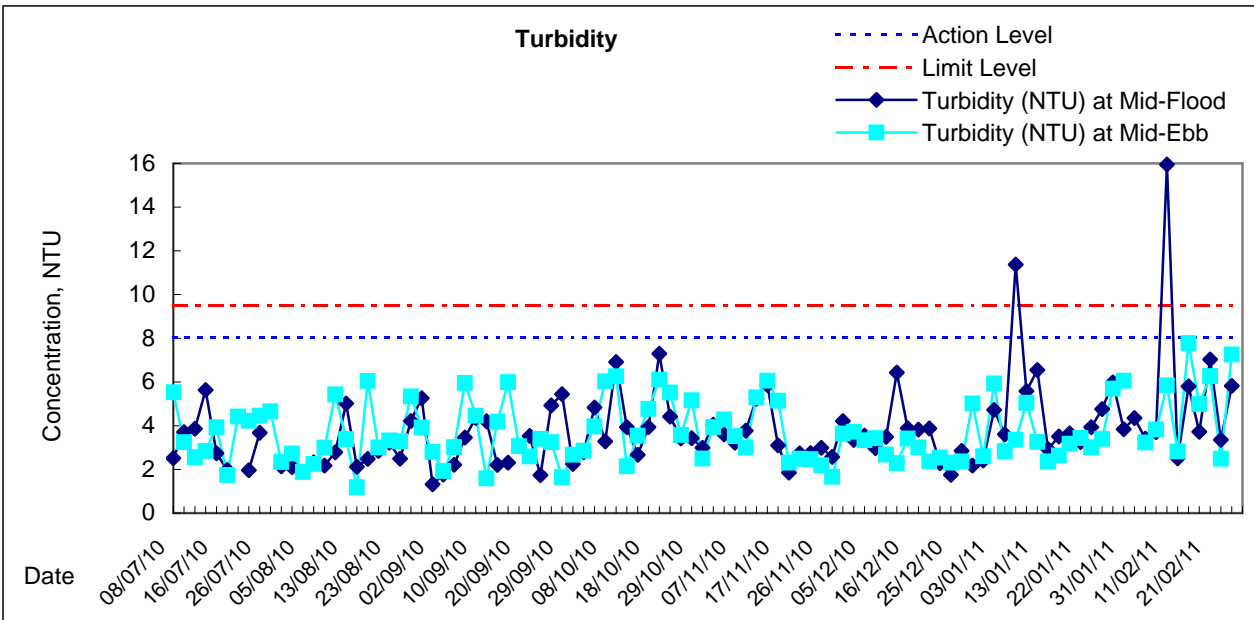
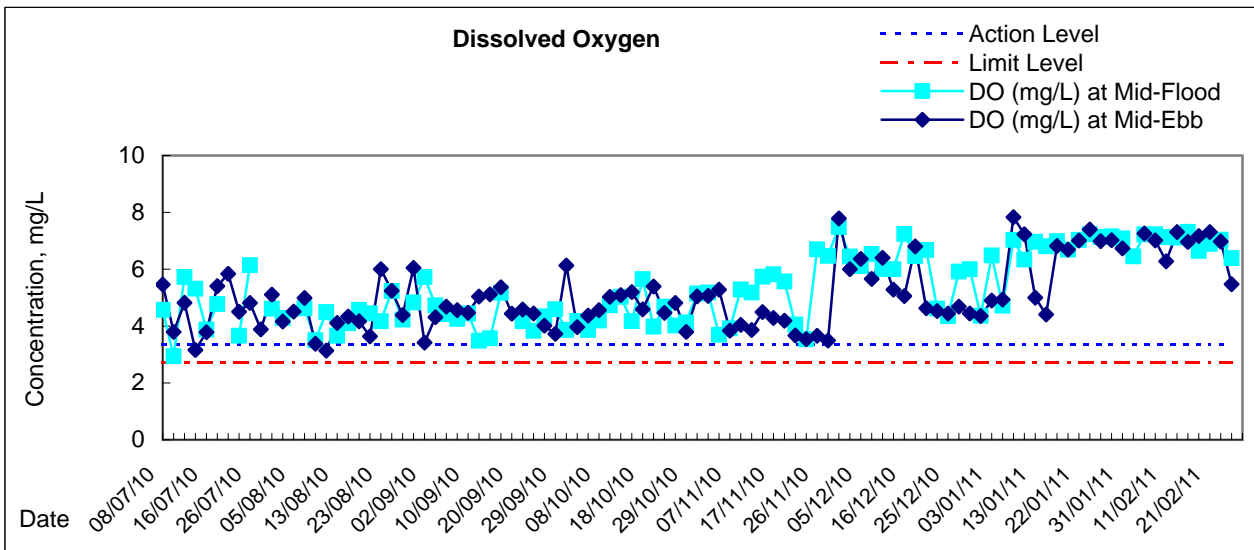
# Graphic Presentation of Water Quality Result of C4e - WCT and GEC (Eastern)

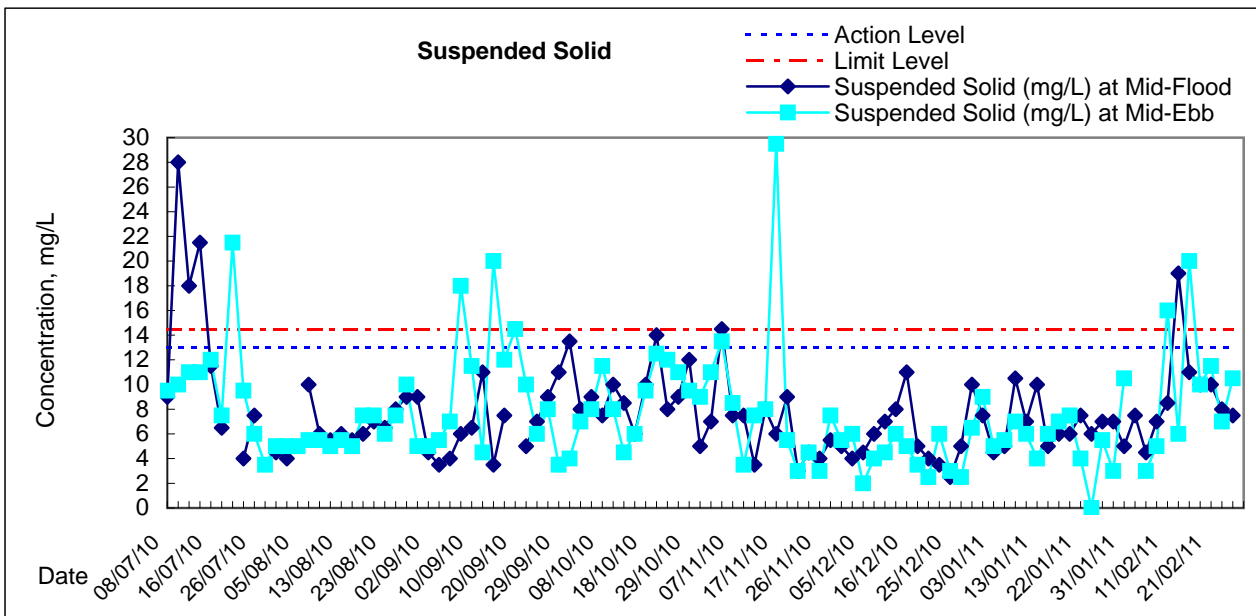
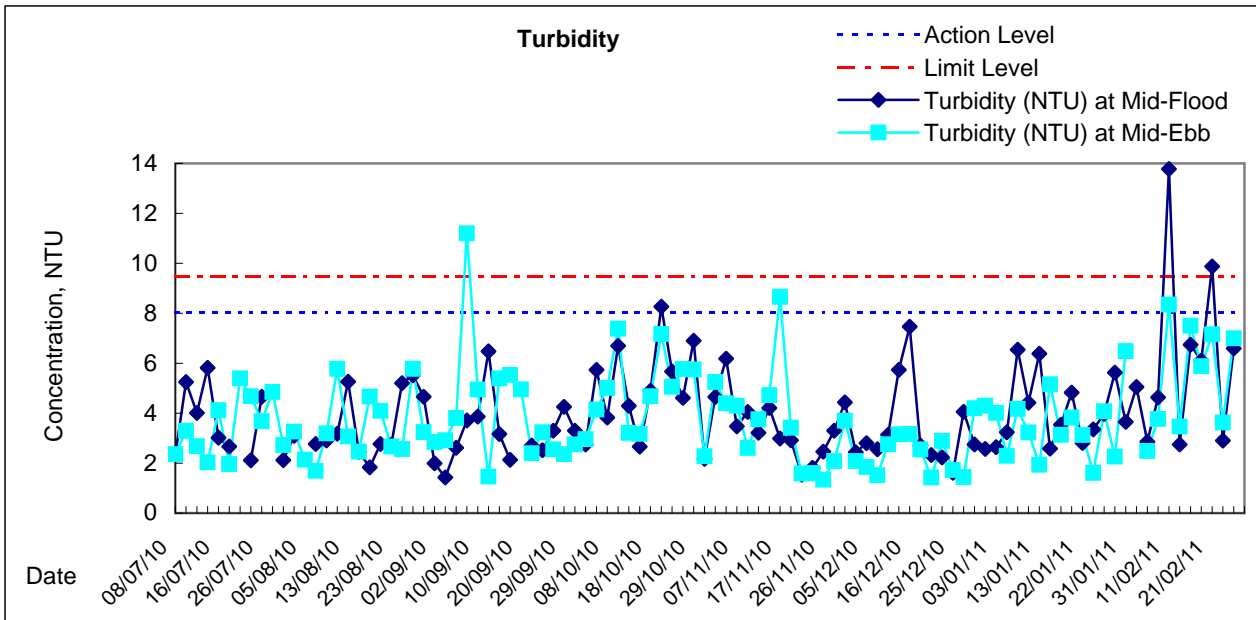
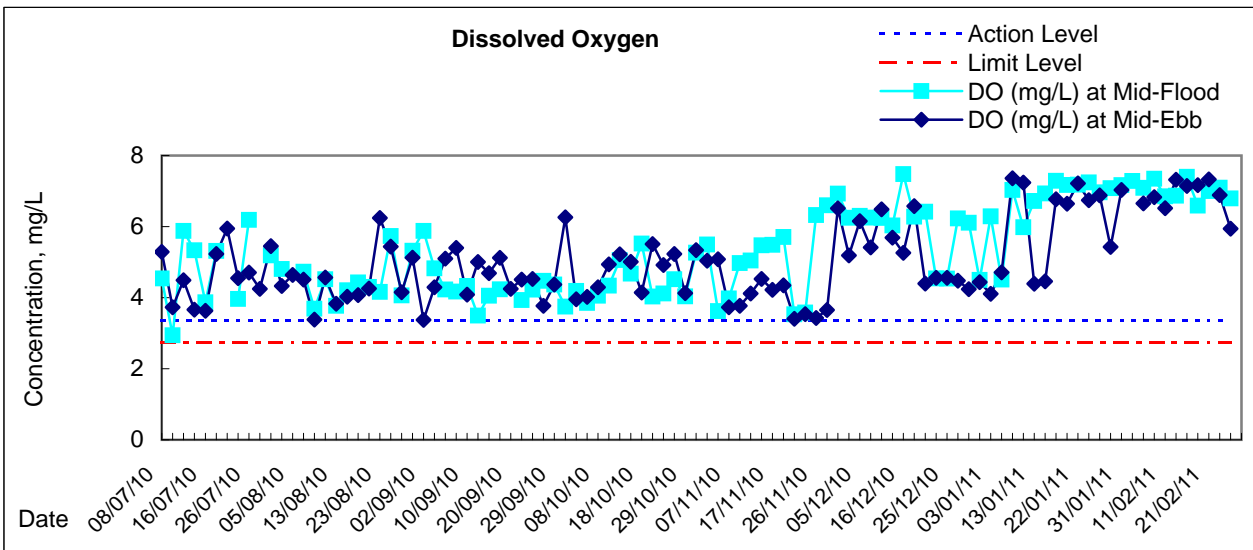




# Graphic Presentation of Water Quality Result of C4w - WCT and GEC (Western)



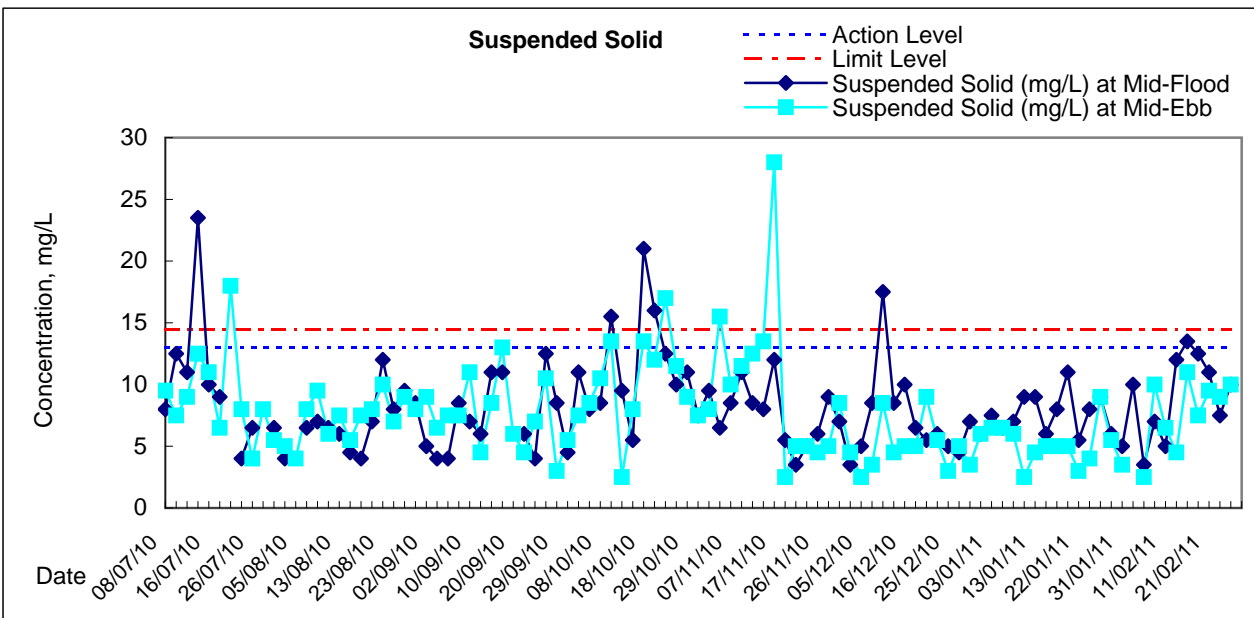
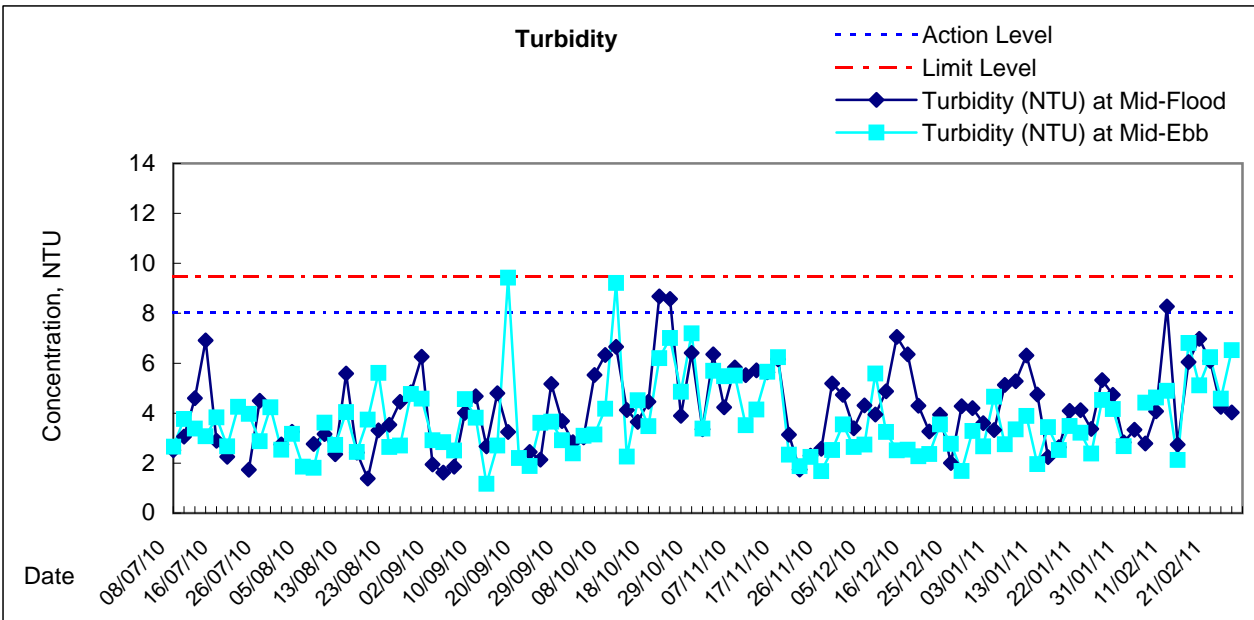
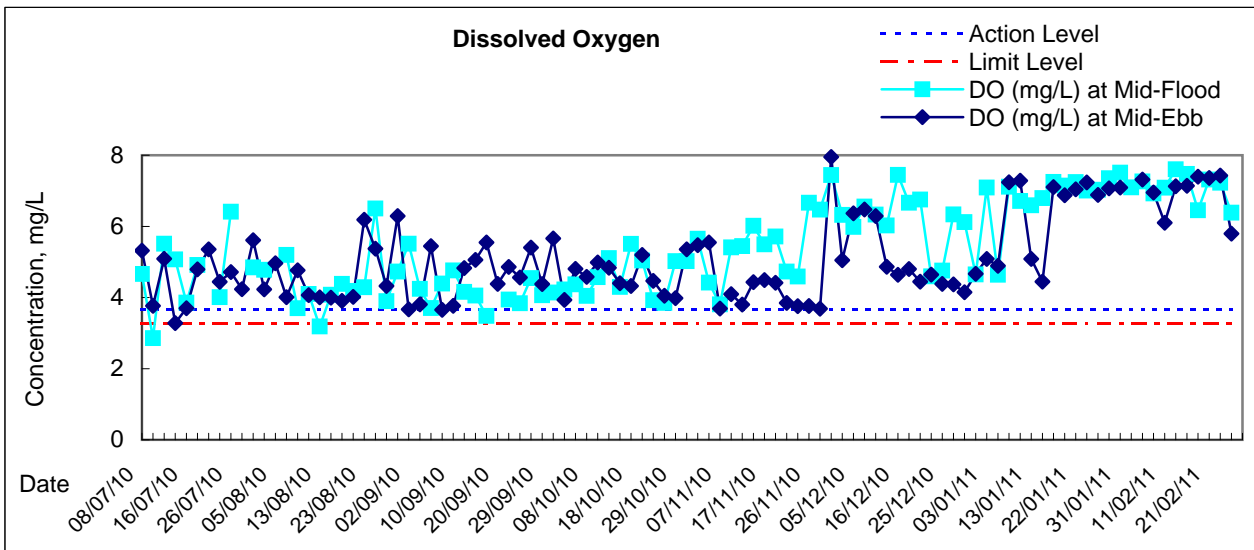






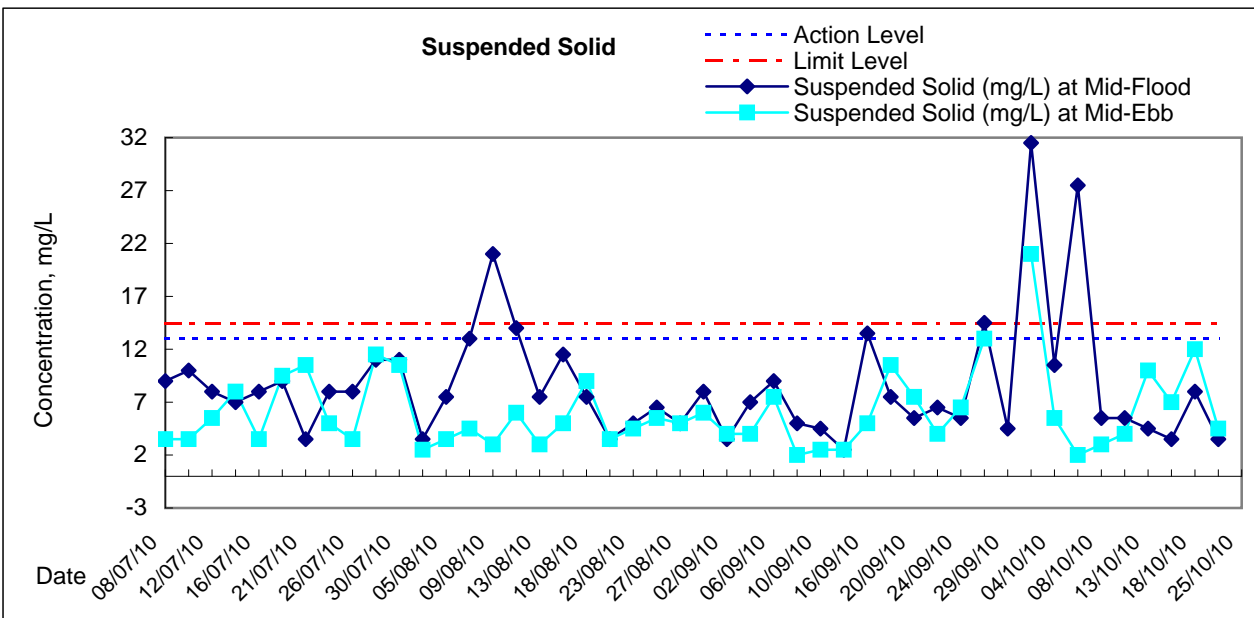
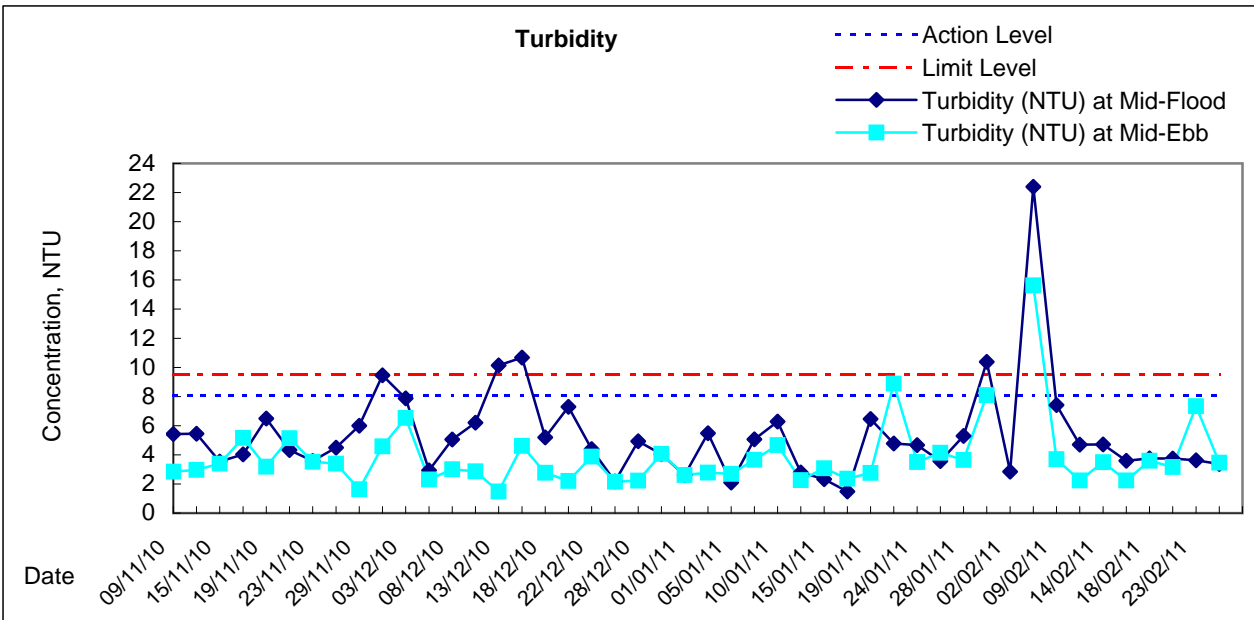
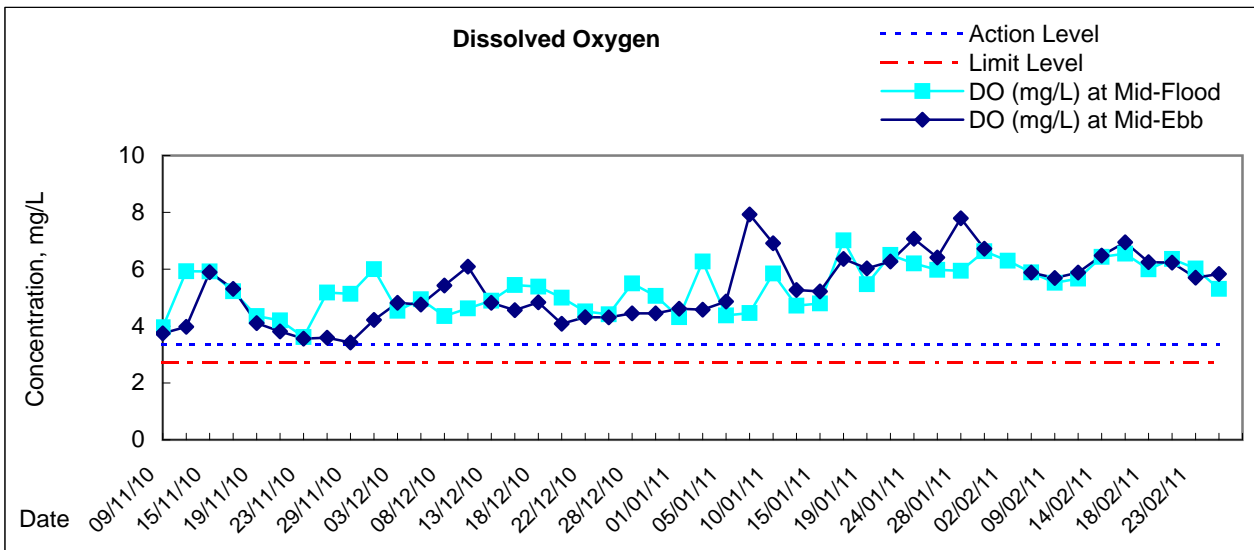


# Graphic Presentation of Water Quality Result of WSD21 - Wan Chai



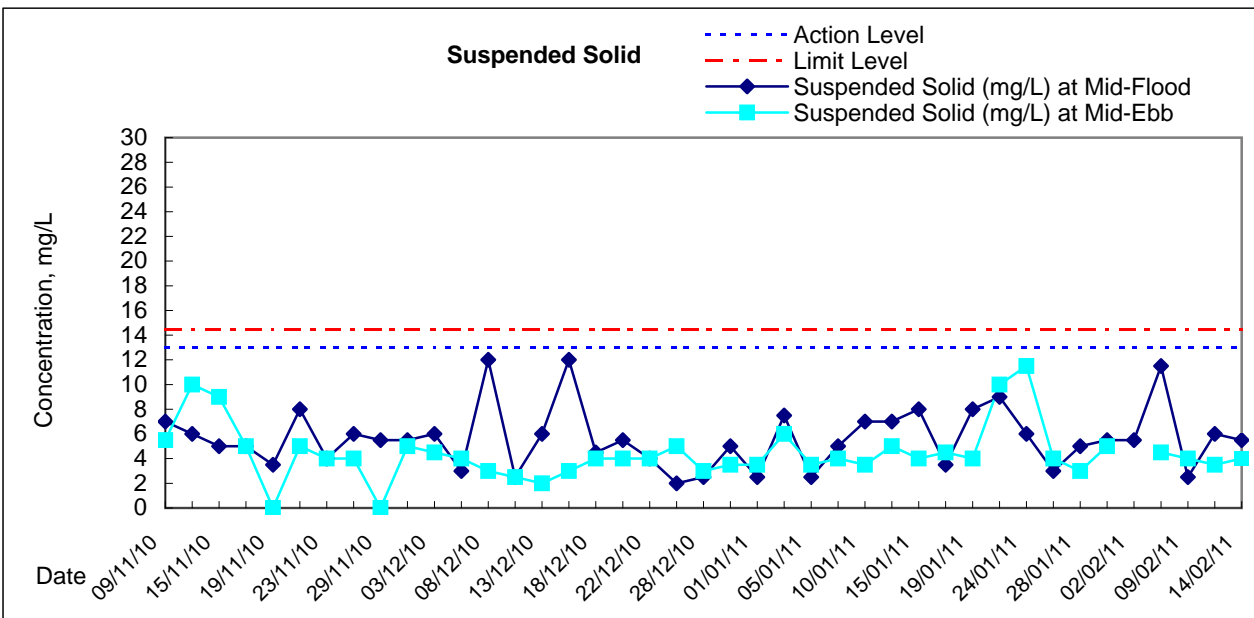
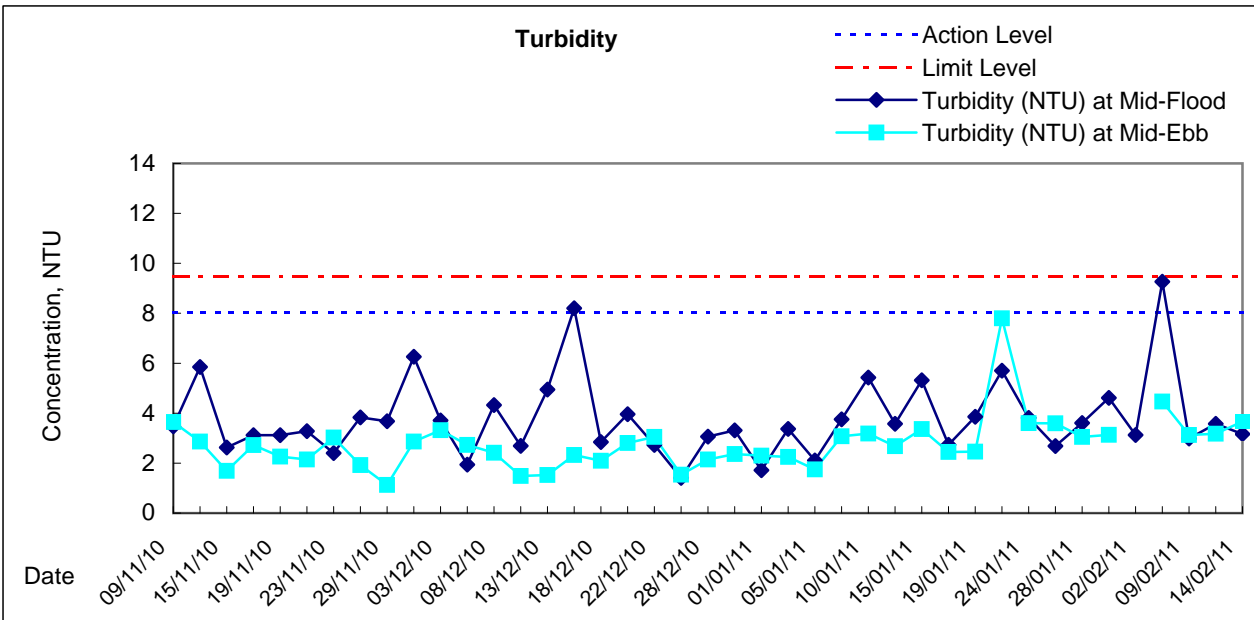
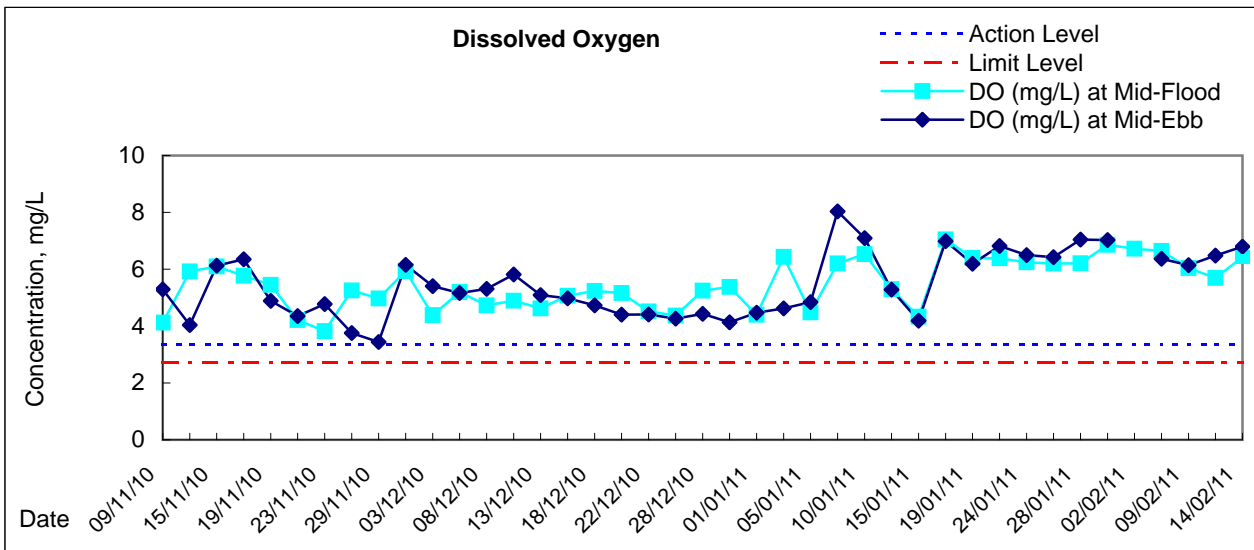


## Graphic Presentation of Water Quality Result of C6 - Excelsior Hotel

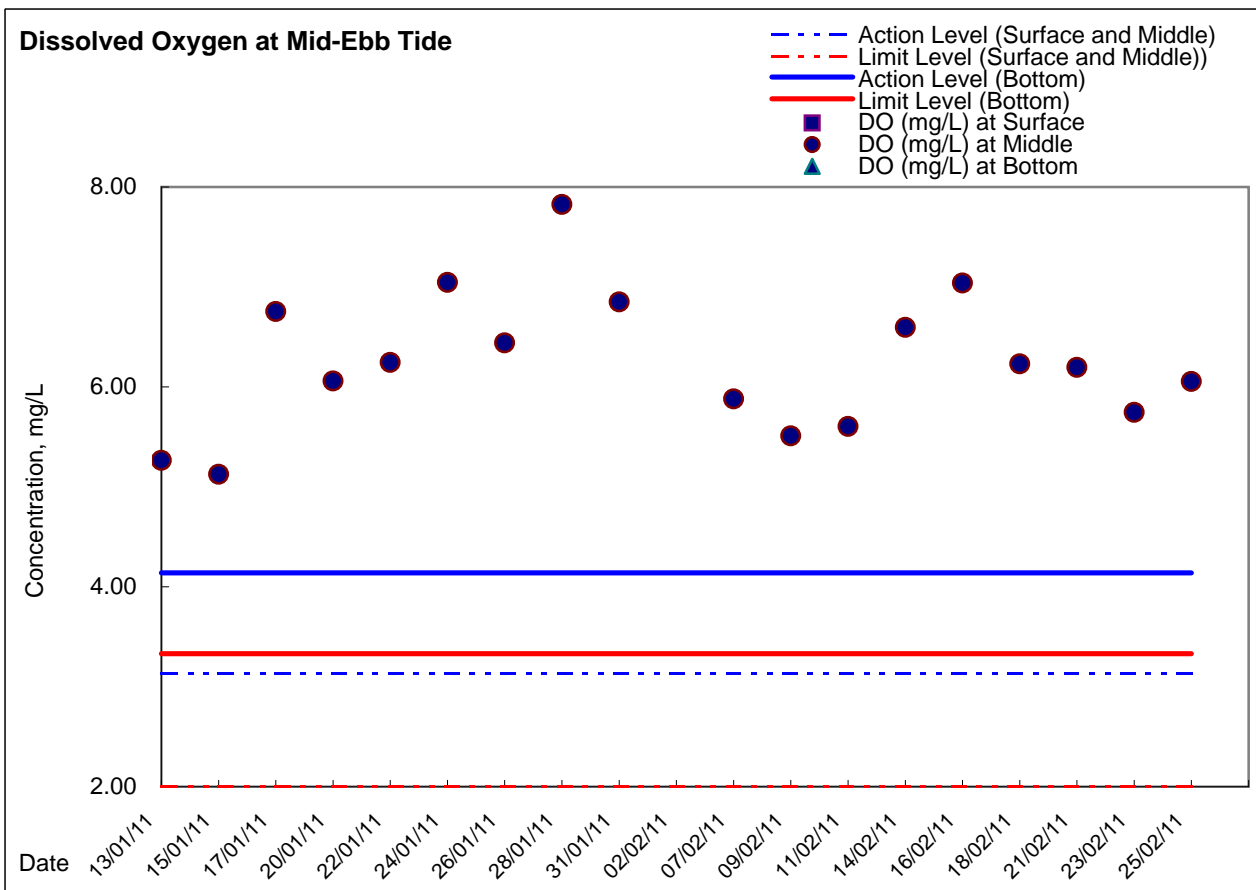
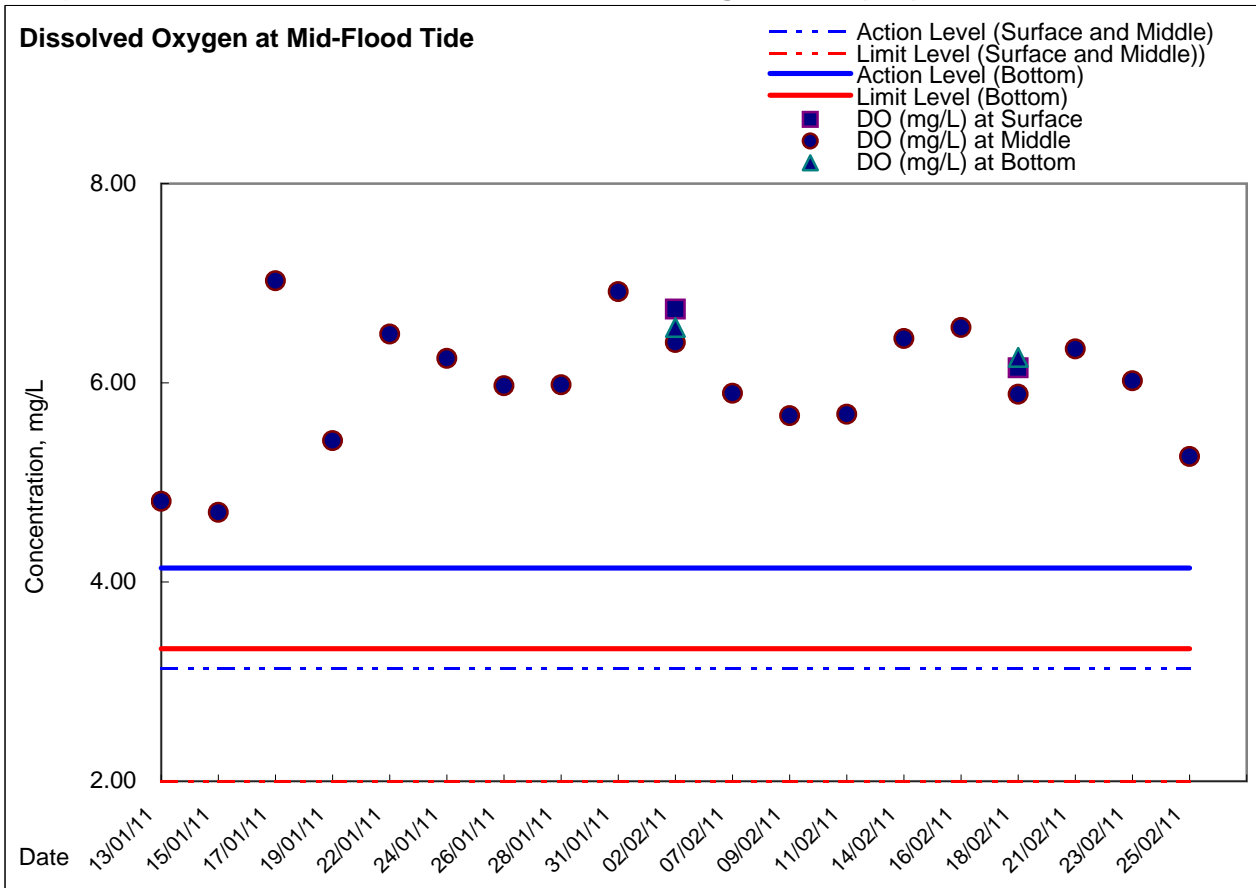




## Graphic Presentation of Water Quality Result of C7 - Windsor House

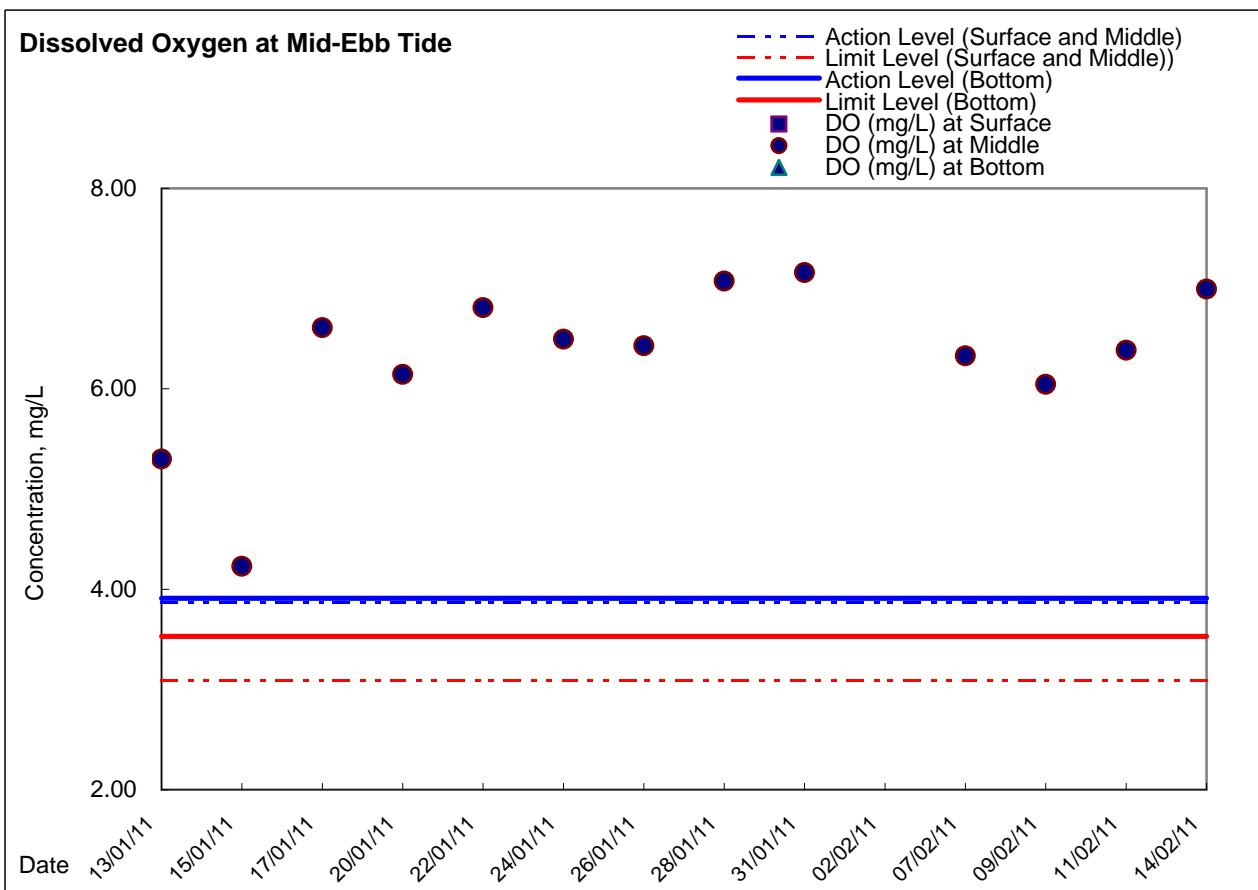
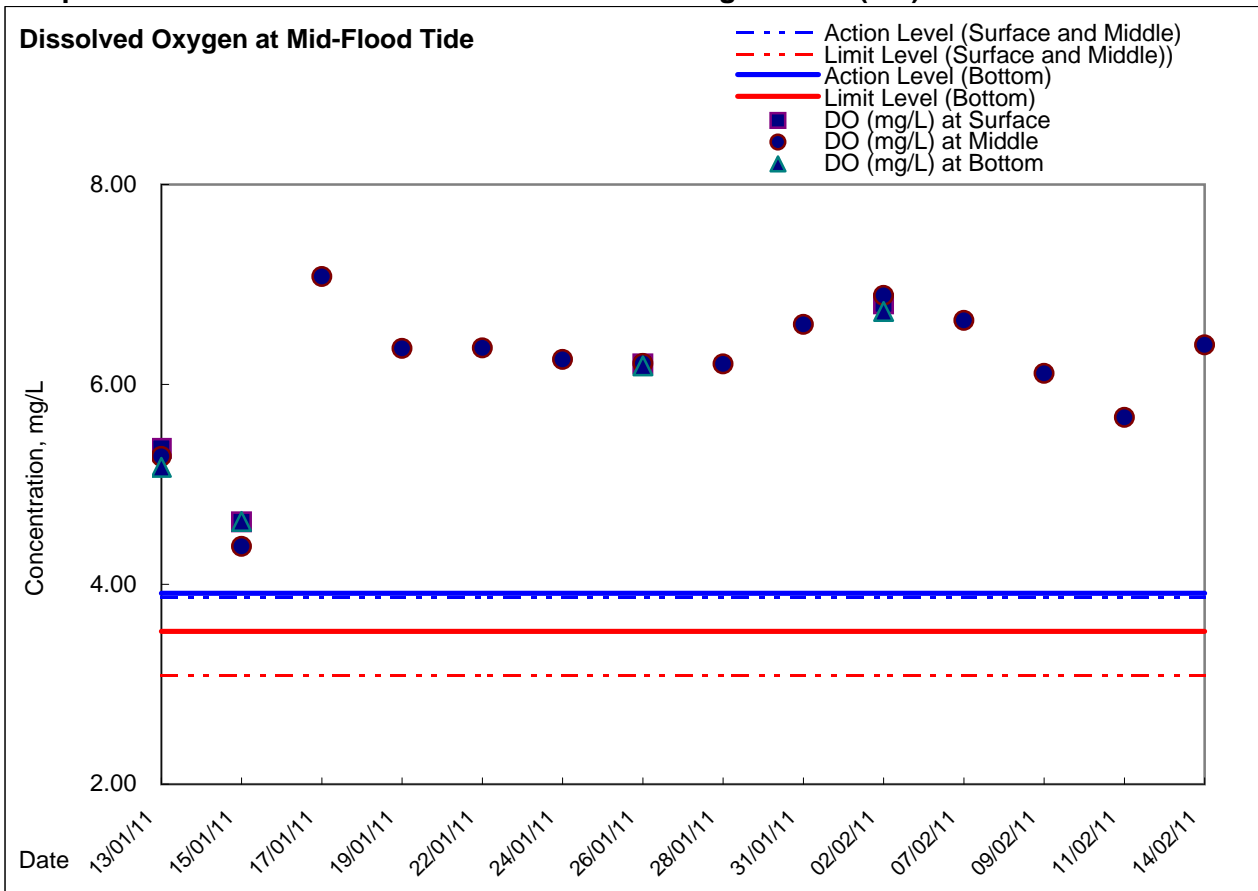


### Graphic Presentation of Enhanced Water Monitoring Results (DO) at C6 - Excelsior Hotel

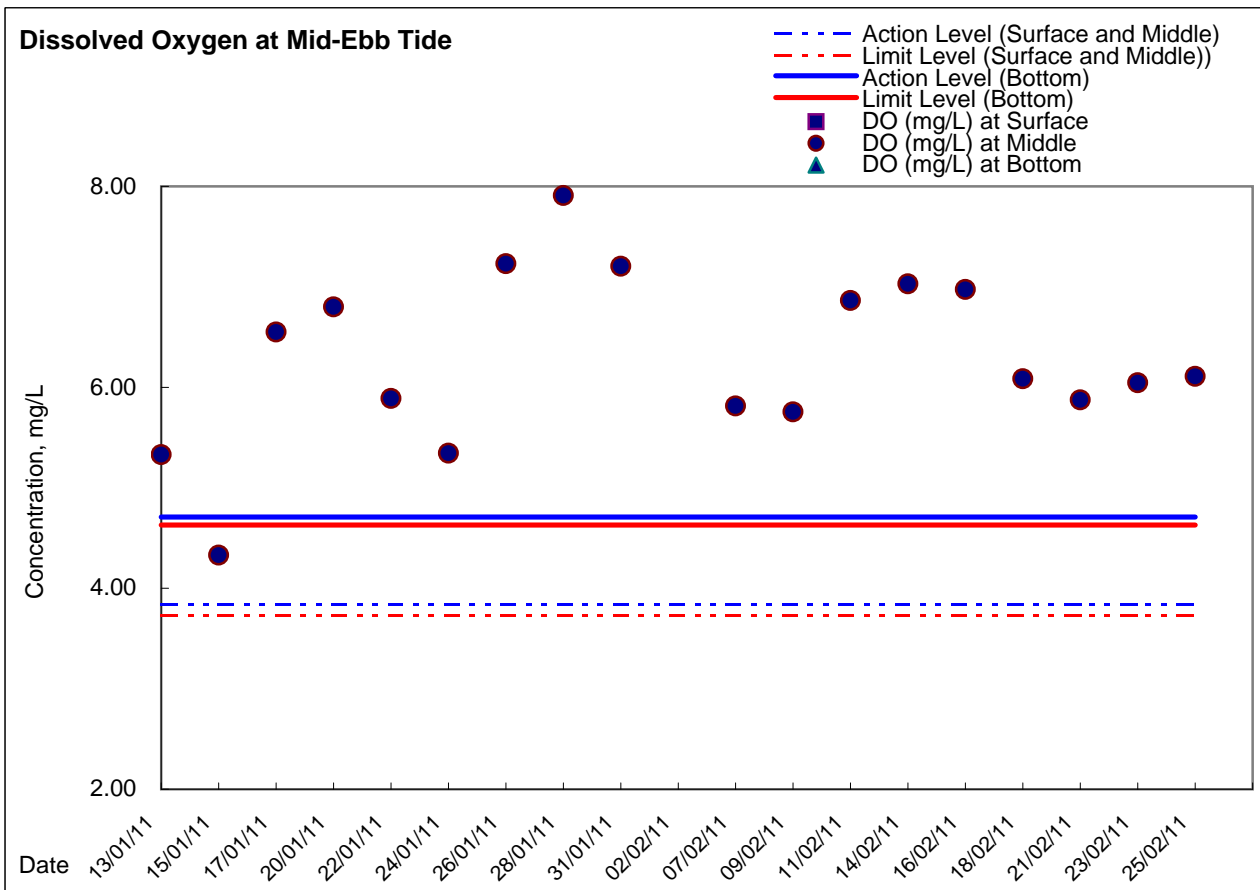
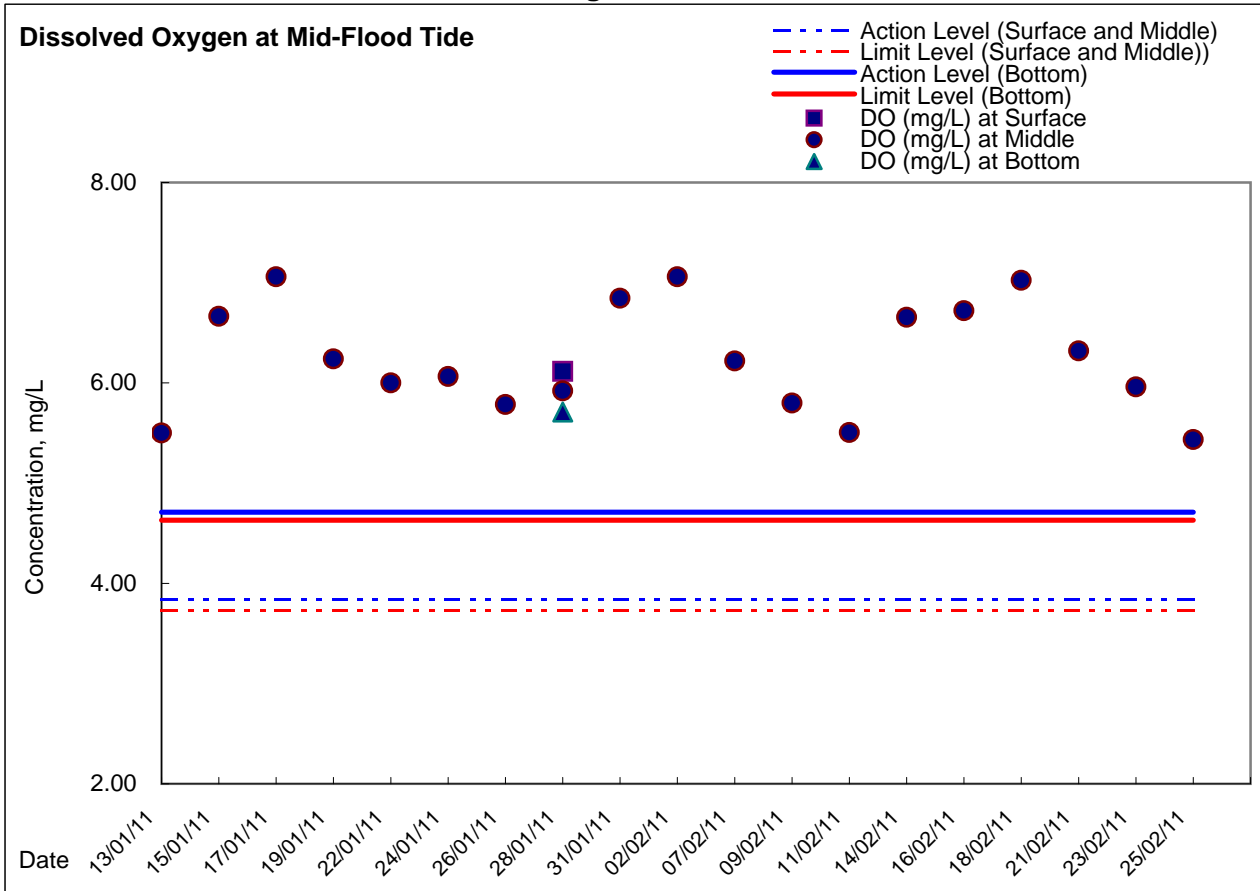




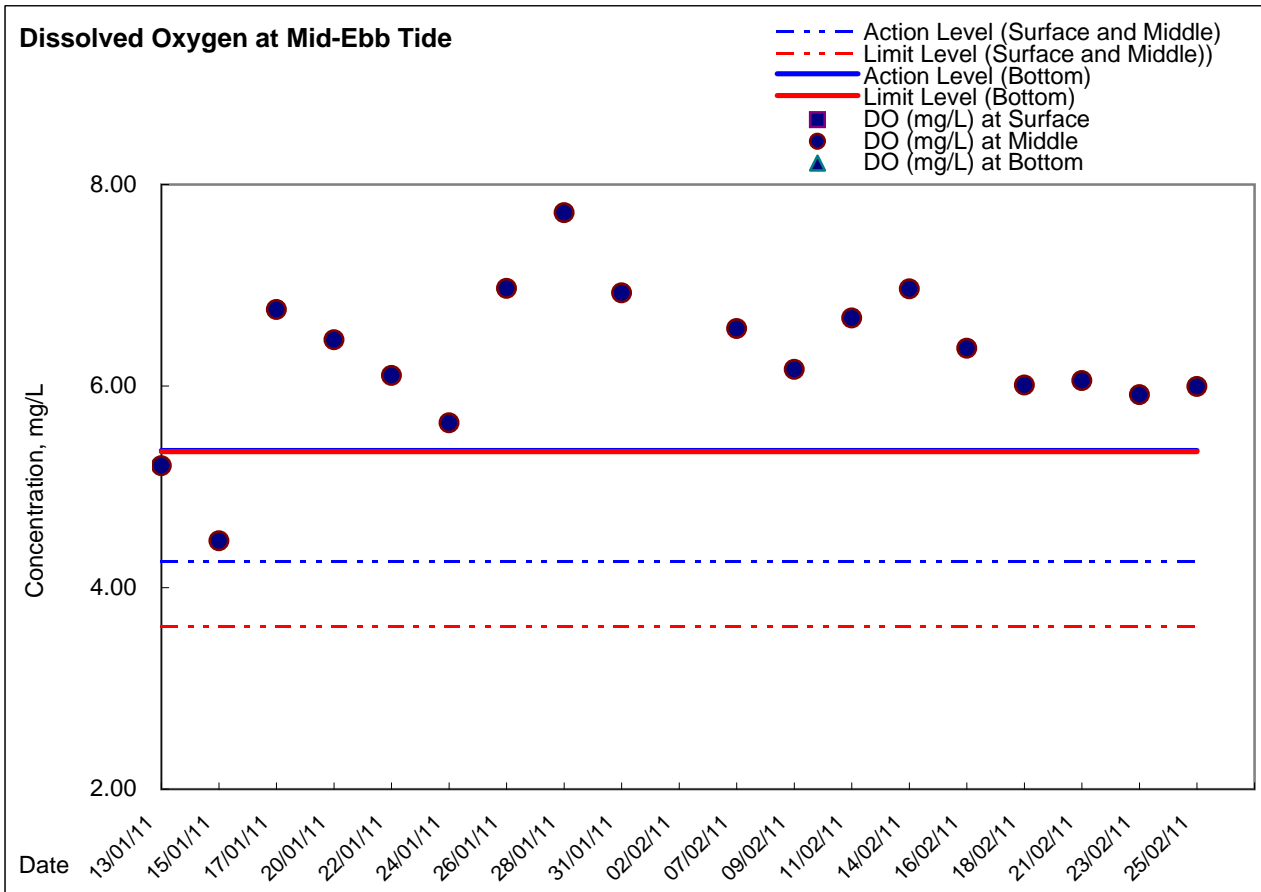
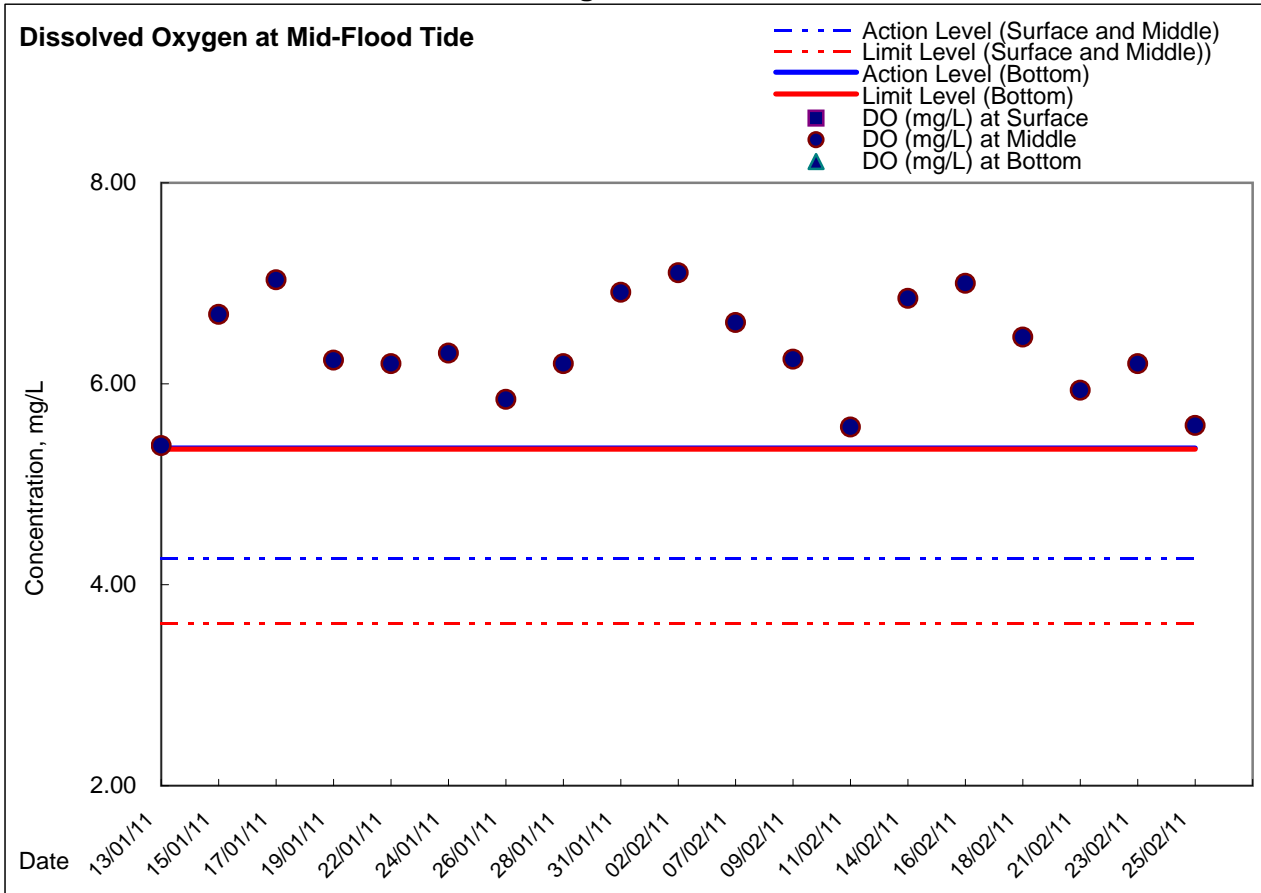
### Graphic Presentation of Enhanced Water Monitoring Results (DO) at C7 - Windsor House



**Graphic Presentation of Enhanced Water Monitoring Results (DO) at Ex-WPCWA SW  
- South-western corners of ex-Public Cargo Works Area**

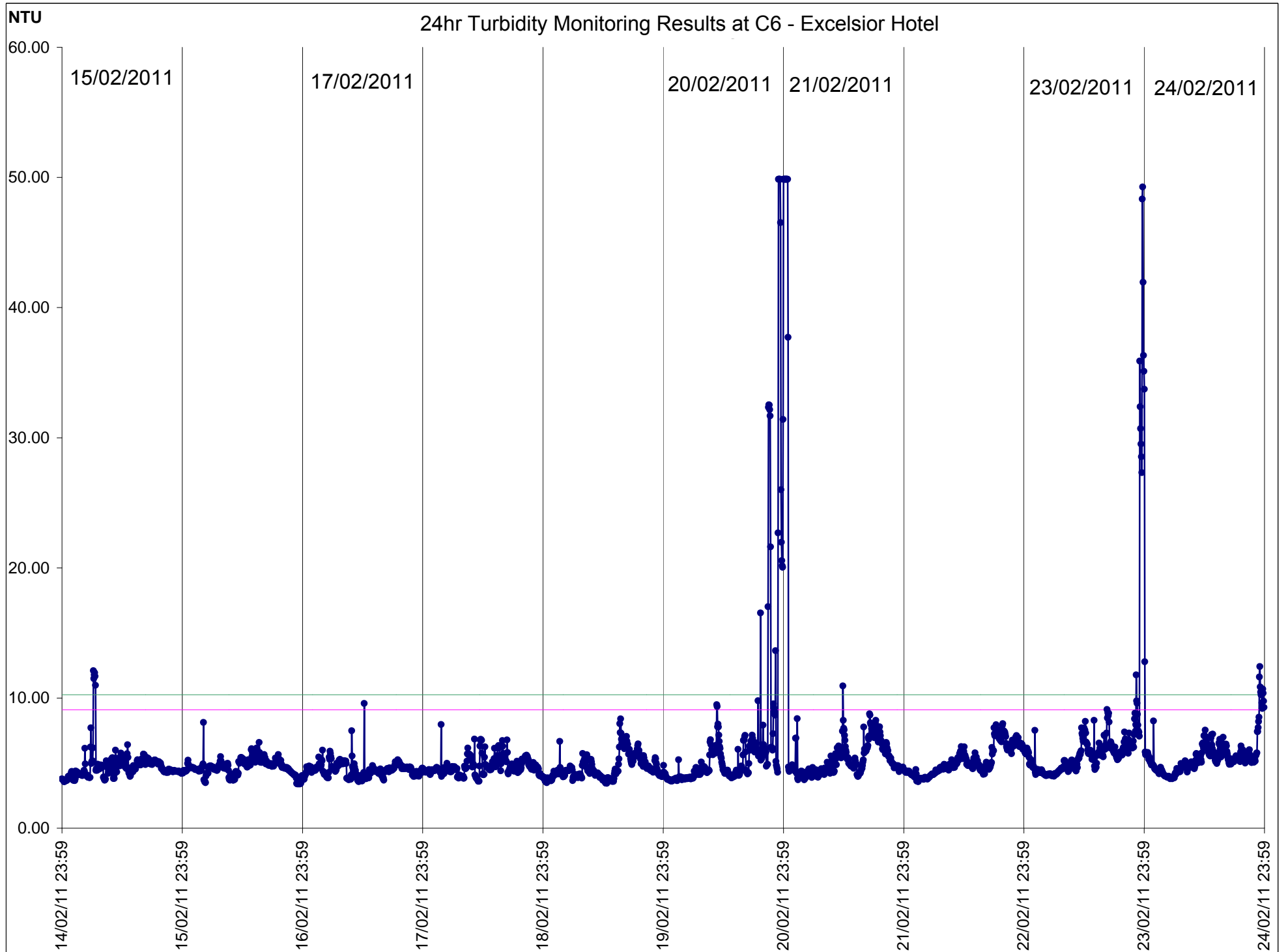


**Graphic Presentation of Enhanced Water Monitoring Results (DO) at Ex-WPCWA SE  
- South-eastern corners of ex-Public Cargo Works Area**

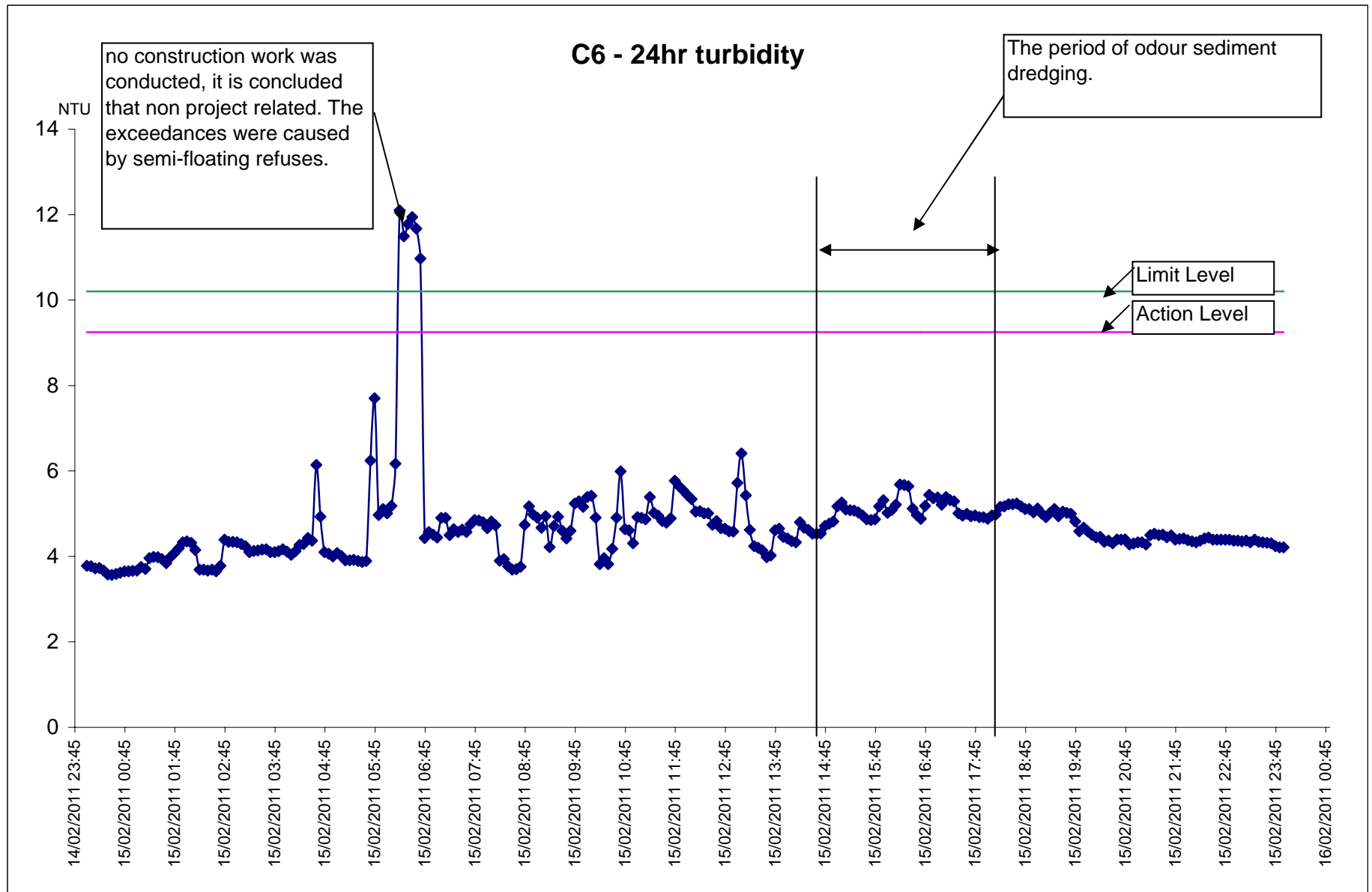


Station Reference	Date and Time	Mid-Flood		Action Level	Limit Level
		Suspended Solids			
		mg/L			
		Value	Average		
C6 Excelsior Hotel	15/2/11	6	5.00	15.00	22.13
	16:30	4			
	16/2/11	7	6.50	15.00	22.13
	16:30	6			
	17/2/11	4	9.50	15.00	22.13
	13:25	15			
	18/2/11	3	3.50	15.00	22.13
	11:00	4			
	19/2/11	11	11.50	15.00	22.13
	9:00	12			
	20/2/11	5	9.50	15.00	22.13
	14:00	14			
	21/2/11	6	6.00	15.00	22.13
	10:00	6			
22/2/11	7	6.50	15.00	22.13	
11:00	6				
23/2/11	6	6.00	15.00	22.13	
10:20	6				
24/2/11	7	7.50	15.00	22.13	
11:00	8				

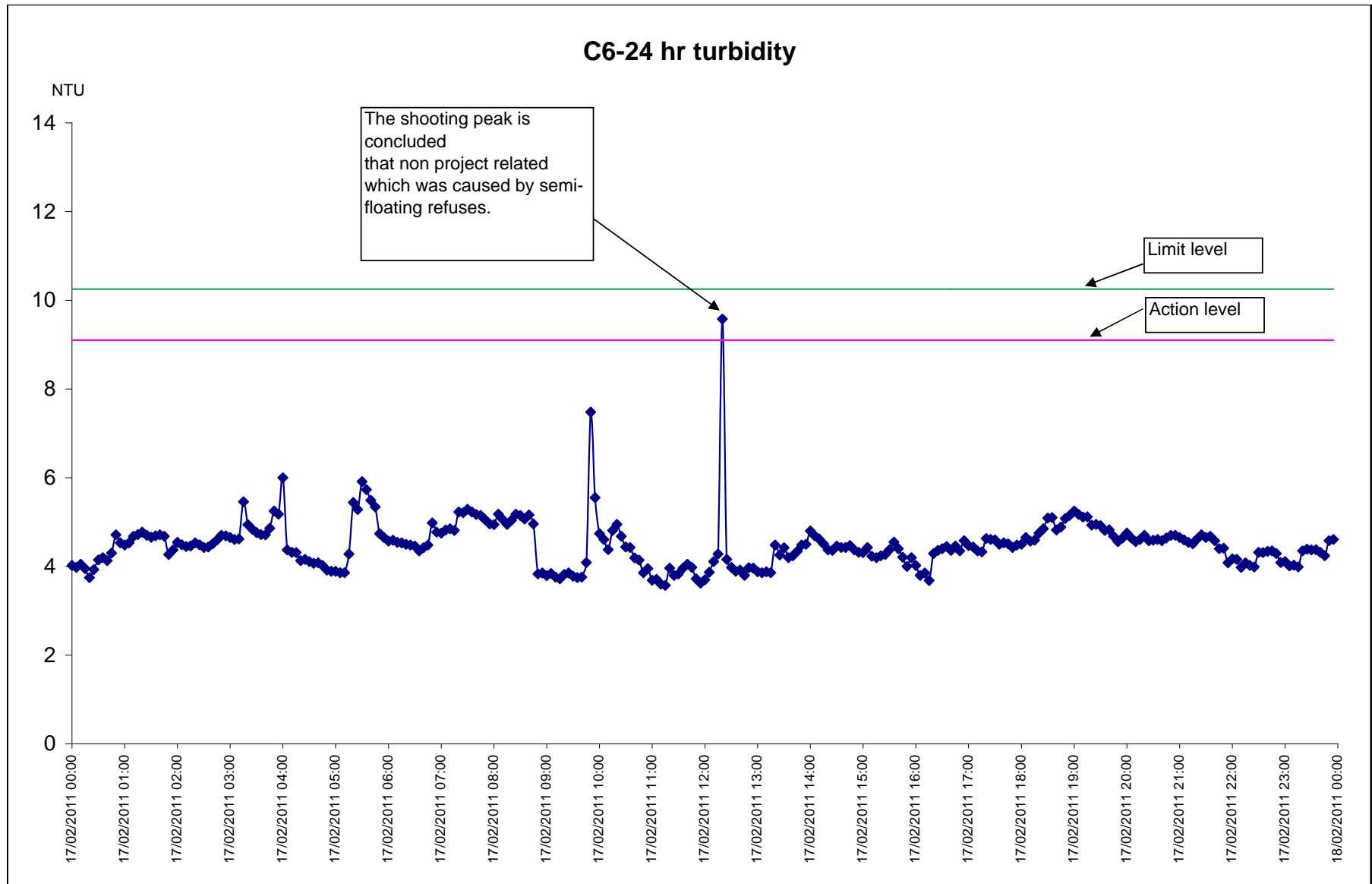




15/02/2011

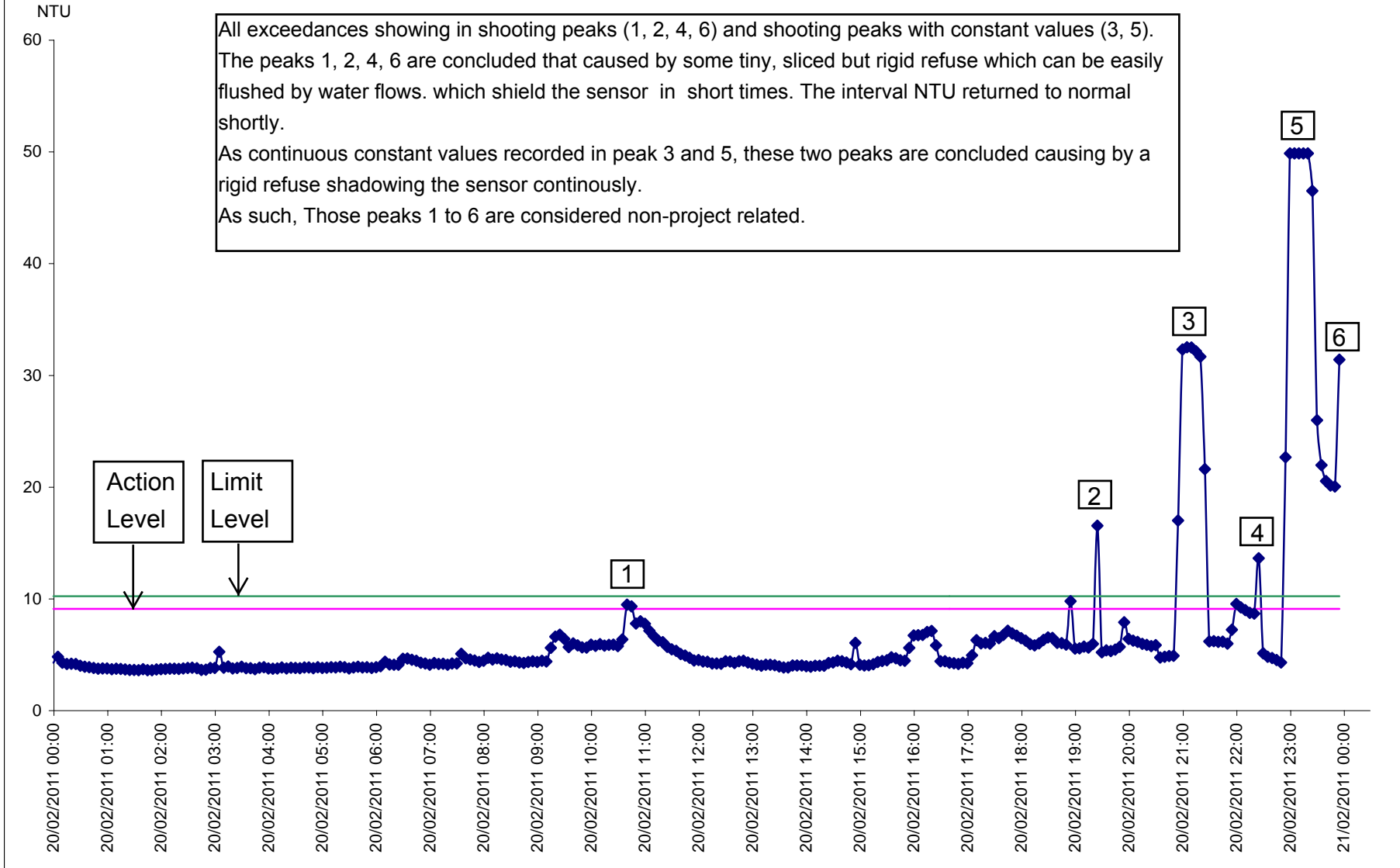


17/02/2011



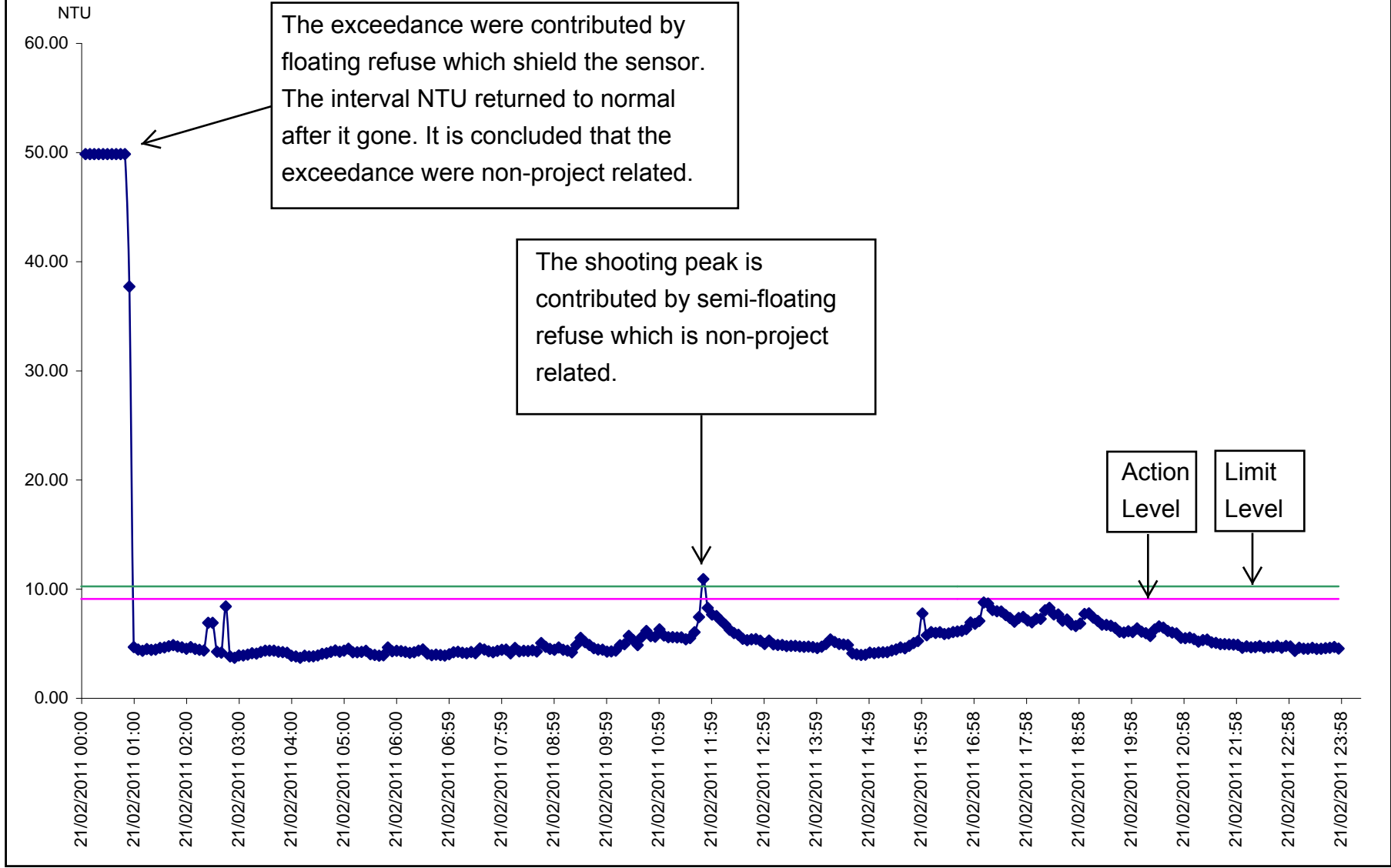
20/02/2011

### C6 - 24hr turbidity



21/02/2011

### C6 - 24 hr turbidity



23/02/2011

